

# **Slieveglass Extension Wind Farm**

## Townlands of Killoan & Bullock Park Castlederg



Proposed wind farm  
extension development

**enÉrgia**  
Renewables

Dear Householder,

Energia Renewables are working on plans to extend our existing Slieveglass Wind Farm near Castlederg. The proposed Slieveglass Extension development consists of 5 additional turbines and is located in the townlands of Killoan and Bullock Park, approximately 4 km from Killen to the northwest and 6 km from Drumquin to the southeast.

Once operational, the proposed 21.5 MW Slieveglass Extension Wind Farm will generate enough renewable energy to meet the average annual electricity needs of around 16,000 additional Northern Ireland households.

Renewable energy projects like the proposed Slieveglass Extension Wind Farm are key to achieving NI Climate Action targets, ensuring security of electricity supply, reducing our reliance on imported fossil fuels and providing lower and predictable long-term electricity prices, which are needed to stabilise the market.

This information brochure provides an overview of our project plans. Please note that all details were correct at time of print but may be subject to change as part of the development and consultation process.

Further information will be available at our planned public information drop-in event in the Killen Community Hall on the afternoon and evening of Tuesday 14 April. We will also regularly update our project website: [www.slieveglass-extension.com](http://www.slieveglass-extension.com).

Please don't hesitate to contact the project team with any questions you may have.

Yours sincerely,



**Darren Doyle**  
Project Manager  
Energia Renewables

*Darren Doyle*

## Contents

1. Meet the team
2. Project location
3. Project overview
4. Site statistics
5. Site layout
6. Environmental considerations
7. Project website
8. Planning process
9. FAQs
10. Working with communities
11. Working with schools
12. Contact us



# 1. Meet the team



## Energia Renewables

Energia Renewables are part of the wider Energia Group - a modern, integrated utility committed to powering the energy transition. We supply over 20% of renewable electricity across the island of Ireland, meeting the energy needs of thousands of homes and businesses.

Our growing renewable energy portfolio currently consists of 17 onshore wind farms, generating over 375 MW of renewable energy.

We have aligned our business activities with UN Sustainable Development goals and are committed to responsible development and community engagement in the areas where we operate, through public consultation and our community investment programmes.



## Canavan Associates

Canavan Associates Ltd is an environmental and planning consultancy based in Derry/Londonderry, providing specialist environmental, planning and project management services for renewable energy and infrastructure developments across the island of Ireland.

The company is preparing the planning application and compiling the Environmental Statement for the proposed Slieveglass Extension Wind Farm.

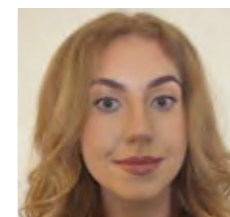
These studies include environmental impact assessments, environmental screening and scoping, site assessments and GIS mapping.

The team works closely with developers, planners, consultant experts, engineers and statutory bodies to ensure projects are robust and compliant, with a strong focus on practical delivery and regulatory certainty.

## The team



**Darren Doyle**  
*Project Manager*  
**Energia Renewables**



**Grace O'Connell**  
*Development Project Engineer*  
**Energia Renewables**



**Gerald O'Reilly**  
*Senior Planning and Environment Officer*  
**Energia Renewables**

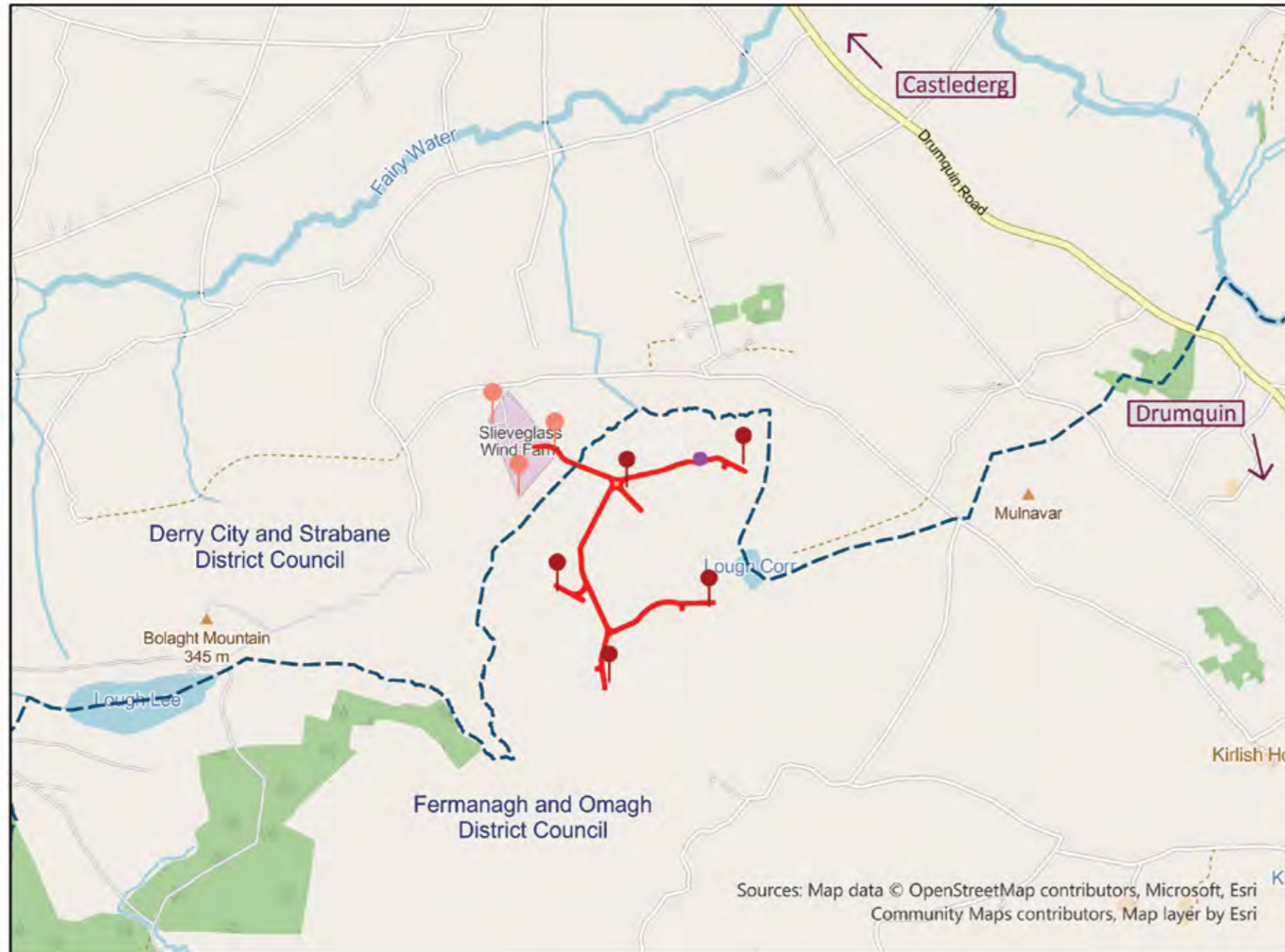


**Rosy Billingham**  
*Community Liaison Officer (CLO)*  
**Energia Renewables**

# 2. Project location

**Legend**

- 1. Proposed Slieveglass Extension Wind Farm turbines
- 2. Existing Slieveglass Wind Farm turbines
- 3. District Council boundary

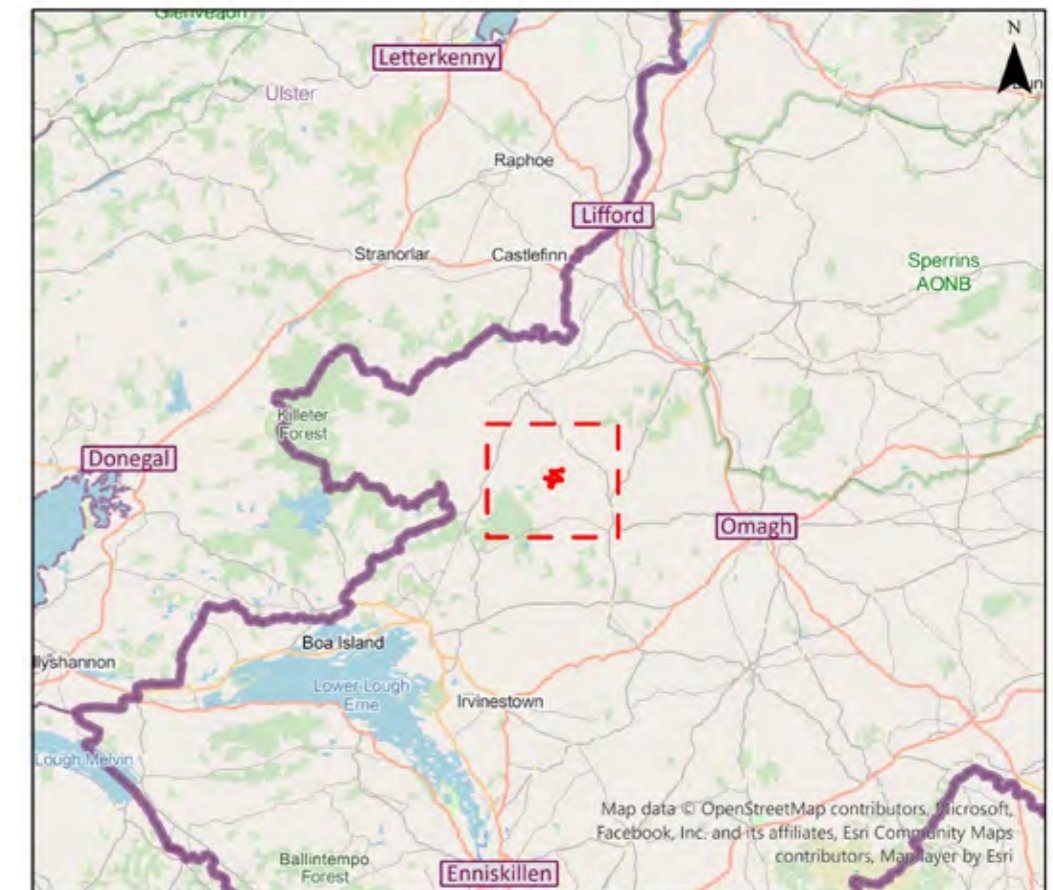


The proposed wind farm extension is located in an area identified as having a high underlying capacity for wind energy. The site is directly adjacent to the operational Slieveglass Wind Farm, which is owned and operated by Energia Renewables.

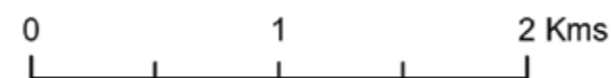
The site has been carefully selected based on feasibility assessments, site investigations and key planning and environmental considerations.

**Legend**

- Wind farm site location



*Please note: project details are correct at time of print and subject to change prior to the submission of the final planning application.*



### 3. Project overview

The proposed Slieveglass Extension Wind Farm will have an installed capacity of 21.5 MW. It will consist of 5 turbines with a maximum tip height of up to 150 metres.

Project plans include:

- New access tracks
- Extension and upgrade of existing tracks
- Crane hardstanding areas
- Control building and compound
- Underground cables
- Site entrance via existing entrance to Slieveglass Wind Farm
- Associated ancillary infrastructure
- Delivery haul route improvements, including passing bays

It is proposed that the project will have an operational lifetime of up to 40 years and will help Northern Ireland to achieve its Climate Action targets and increase security of energy supply.

*Slieveglass Wind Farm - operational since 2018*

### 4. Site statistics



Proposed wind farm capacity  
**21.5 MW**



Turbine tip height up to  
**150 m**

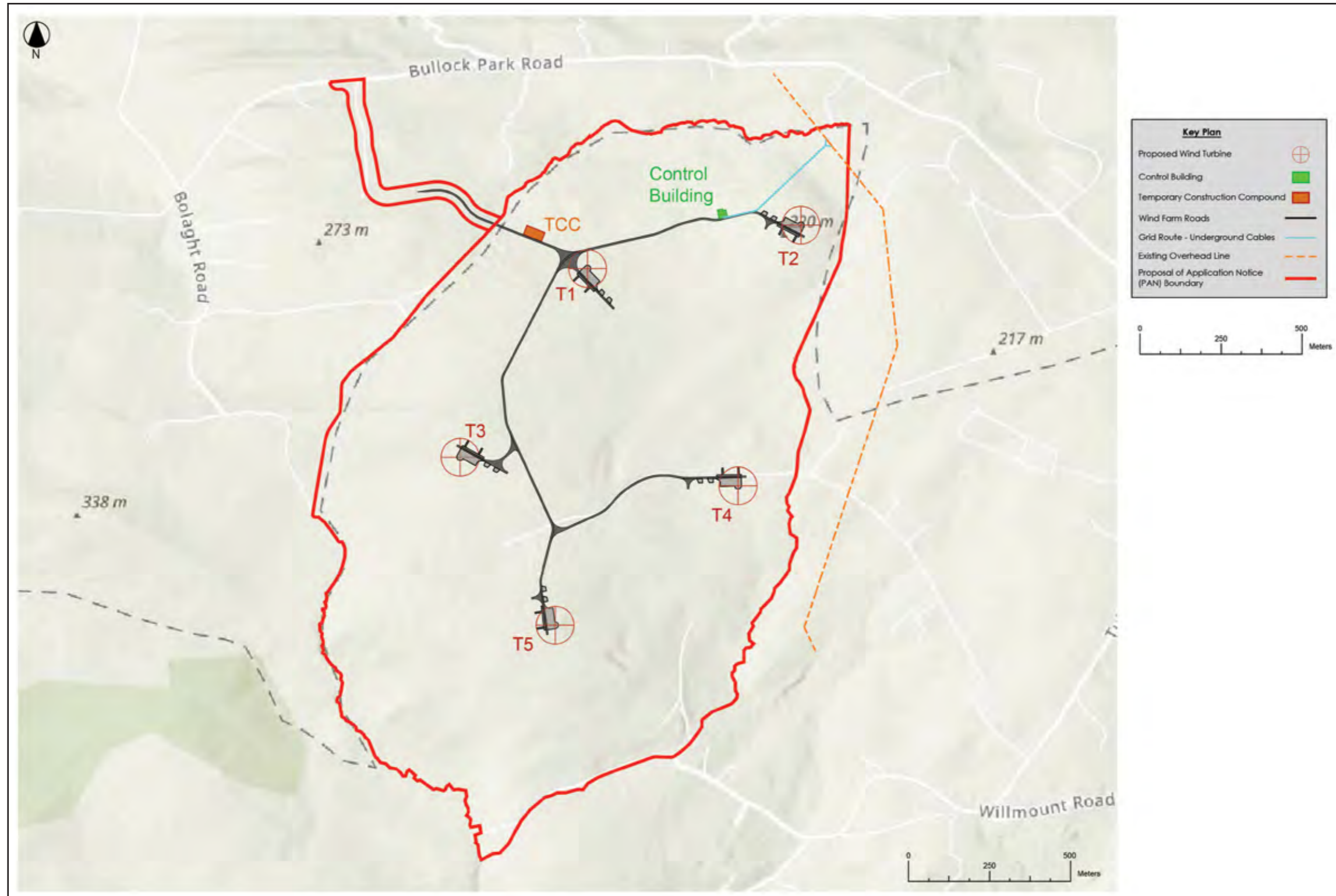


Generating enough renewable electricity to meet the average annual household needs for around  
**16,000 NI homes**



Equivalent to removing around  
**10,500 cars**  
off our roads every year

# 5. Site layout



Please note: project details are correct at time of print and subject to change prior to the submission of the final planning application.

## 6. Environmental considerations

An environmental impact assessment, presented in the form of an Environmental Statement, will be submitted as part of the planning application. This assessment will consider a range of potential impacts, including **noise**, **shadow flicker** and **visual impacts**, together with other key environmental topics such as:

- Population and human health
- Terrestrial and aquatic ecology, bats and ornithology
- Land and soil
- Water
- Air quality and climate
- Landscape
- Archaeology and cultural heritage
- Traffic and transport

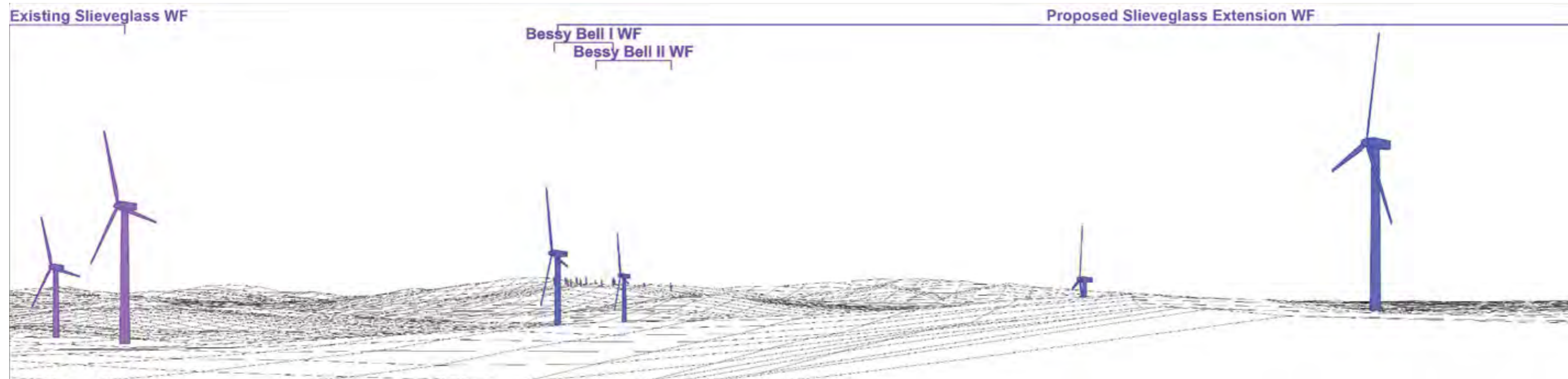
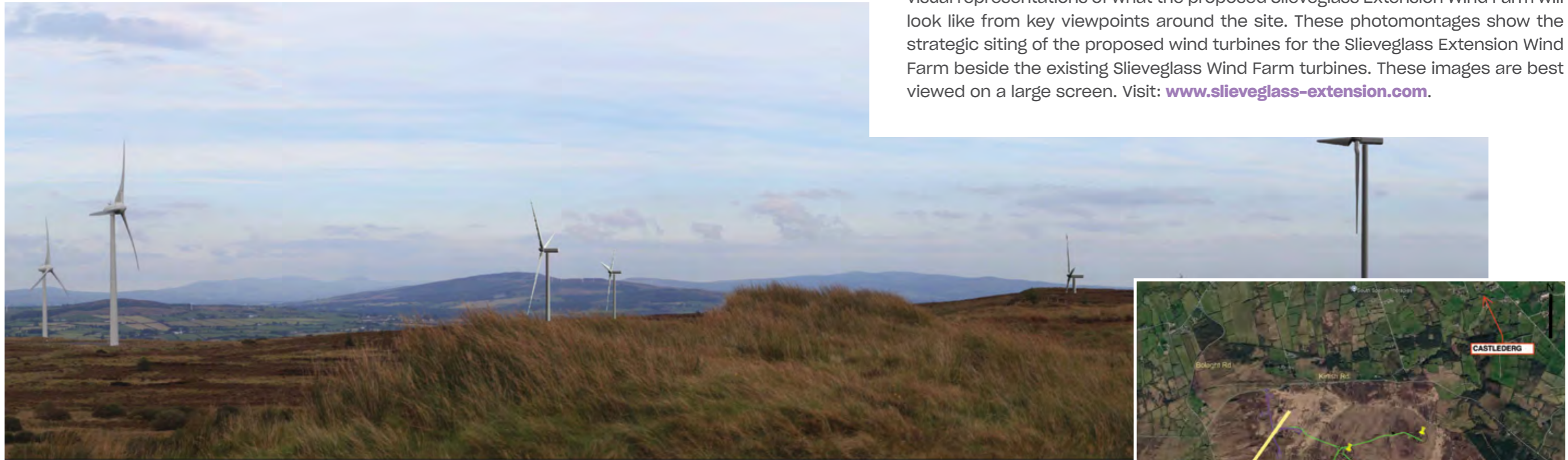
These assessments will also take account of other existing, consented or proposed wind energy developments in the area, enabling a full evaluation of cumulative impacts.



Skylark

## 7. Project website

We have created a project website, where you can view photomontages or visual representations of what the proposed Slieveglass Extension Wind Farm will look like from key viewpoints around the site. These photomontages show the strategic siting of the proposed wind turbines for the Slieveglass Extension Wind Farm beside the existing Slieveglass Wind Farm turbines. These images are best viewed on a large screen. Visit: [www.slieveglass-extension.com](http://www.slieveglass-extension.com).



## 8. Planning process: what happens next?

We will be visiting households ahead of a drop-in public information event in April at the nearby Killen Community Hall. Members of the public are invited to come and meet the project team to find out more about the proposed development.

Our project website will be updated as more information becomes available. It features an online feedback form. If you would like to receive further information, please include your contact details. We welcome your comments.

We will summarise issues raised through our engagement activity in a Pre-Application Community Consultation Report, which will be included in our planning applications. Please note: all feedback must be received no later than **14 May 2026** for consideration as part of the planning submissions.

Due to the location of the proposed development, which straddles two separate council areas, we will be submitting planning applications to both Fermanagh & Omagh District Council (wind farm site) and Derry City & Strabane District Council (wind farm access).

We are keen to get early feedback on our plans from local residents but comments should not be sent directly to the District Councils at this pre-application consultation stage. Please note that observations made to the project team do not classify as formal representations to the planning authorities.

Once planning applications have been submitted, local advertisement and neighbour notification will take place and there will be an opportunity for members of the public to make formal observations to the relevant planning authority at that time.

Planning application documents will be available for viewing at Council offices and on the NI Planning Portal. A link to the application will be provided on our website.



# 9. FAQs

## Why is this wind farm extension necessary?

The Northern Ireland Assembly has declared a Climate Emergency and its Path to Net Zero strategy sets a goal of a 100% reduction in greenhouse gas emissions from baseline levels by 2050. This will require at least 80% of electricity consumption to come from renewable sources by 2030.

## Why was this location chosen?

The Slieveglass Extension Wind Farm site has been identified as suitable for wind energy development based on a number of factors, including:

- Proximity to the operational Slieveglass Wind Farm
- Wind speeds and proximity to existing grid infrastructure
- Location within an area identified as having 'highest underlying capacity' for wind energy (Fermanagh & Omagh District Council Local Development Plan 2030)

## How big is the site?

The Slieveglass Extension Wind Farm landholding covers approximately 255 hectares. However, the footprint of the proposed Slieveglass Extension development will be much smaller. Energia will lease land for the turbine foundations, turbine hardstands, access track and control building. This allows the landowner to continue to utilise the rest of the site.

## What about visual impact?

A comprehensive landscape and visual impact assessment will be undertaken. The development will be designed to integrate with the existing landscape through careful siting and consideration of scale.

## What about cumulative impact?

The Environmental Statement will assess cumulative and combined factors, including operational noise, shadow flicker and visual impacts. The Slieveglass Extension Wind Farm is directly adjacent to the operational Slieveglass Wind Farm. There are a number of other operational and consented wind farms within a 5 km radius, including:

- Castlecraig Wind Farm (2.4 km distance)
- Bin Mountain Wind Farm (2.5 km distance)
- Lough Hill Wind Farm (2.7 km distance)

## Why are turbines getting taller?

Thanks to advances in technology, today's turbines generate more electricity, enabling wind farms to achieve maximum capacity with fewer turbines overall - improving efficiency while reducing land take and infrastructure requirements.

## Will new overhead lines be created?

No additional overhead lines will be installed. The site will connect to the electricity network via a 400-metre underground cable from the control building, looping into the existing Drumquin-Slieveglass 33 kV overhead line which crosses the site, using two timber end masts. The control building itself has a footprint of around 120 m<sup>2</sup> and an associated 180 m<sup>2</sup> compound containing electrical equipment.

## What about noise?

Wind turbine technology has significantly improved over the last decade, resulting in lower operational noise levels. A detailed noise monitoring and assessment programme is being undertaken to ensure that noise levels will not adversely affect local residents. Noise limits are imposed as planning conditions which remain in force for the lifetime of a wind farm.

## What about shadow flicker?

Shadow flicker can occur when rotating turbine blades cast intermittent, flickering shadows into buildings through narrow openings, such as windows, when the sun is low in the sky at sunrise or sunset.

A specialist shadow flicker assessment is currently underway. Planning guidelines state that shadow flicker impacts should not exceed 30 hours per year or 30 minutes per day at properties within 500 metres of a turbine.

## What about local wildlife?

Ecologists and ornithologists have been carrying out detailed surveys of wildlife and habitats. Their findings will be included in the Environmental Statement, which will be submitted and made public as part of the planning application.

## How long will construction last?

Construction of the wind farm will take approximately 18 - 24 months. This will start with initial site preparation works for access, followed by the construction of the substation compound and installation of the associated electrical equipment and turbines before the final commissioning and energisation stage.

## What about construction traffic?

A traffic management plan will be put in place to manage construction traffic safely and efficiently. Our community engagement team will liaise with local residents and businesses to minimise disruption.

## What benefit will this wind farm bring to the local area?

Energia will be investing around £35 million in this important new renewable energy development, which will make a significant annual business rates contribution to both Fermanagh & Omagh and Derry City & Strabane District Councils. This annual revenue will support the provision of local council services and public infrastructure.

Once operational, the Slieveglass Extension Wind Farm will operate an annual community benefit fund, which will be administered on behalf of Energia by an independent charitable trust in line with the existing Slieveglass Wind Farm community benefit fund.

**If you can't find the answers you are looking for, please complete our online feedback form and include your contact details so that we can get back to you with more information. Visit [www.slieveglass-extension.com](http://www.slieveglass-extension.com).**

## 10. Working with communities



Nature observation enclosure at St Mary's PS, Brookeborough

Our wind farms operate community benefit funds which support community projects and services in the local area.

These funds are administered on behalf of Energia by independent charitable trusts. Our total wind farm benefit fund investment to date is nearly £5 million – and growing.

Funds are designed in conjunction with the local community to ensure that our funding prioritises sustainability goals and has a positive and lasting

impact. We welcome your thoughts on how the scheme could be structured.

Slieveglass Wind Farm already operates an annual fund which opens for community grant applications every autumn. The Slieveglass Extension fund will boost Energia's local community investment programme and will begin allocating grants one year after the start of commercial operation.

# 11. Working with schools

Once our sites are up and running, our Operations teams are happy to facilitate school and college visits to our local wind farm developments. We're also keen to arrange school workshops and classroom talks on renewable energy.

- **Learn...** about wind energy
- **Discover...** how wind turbines generate electricity
- **Explore...** the need for climate action and energy transition



# 12. Contact us



## We want to hear from you

If you have any questions, please get in touch:



Telephone our Community Liaison Officer on  
**078 8043 2201**



You can also email us at **[clo@energia.ie](mailto:clo@energia.ie)**



And don't forget to check the website for updates:  
**[www.slieveglass-extension.com](http://www.slieveglass-extension.com)**



**energia**  
Renewables