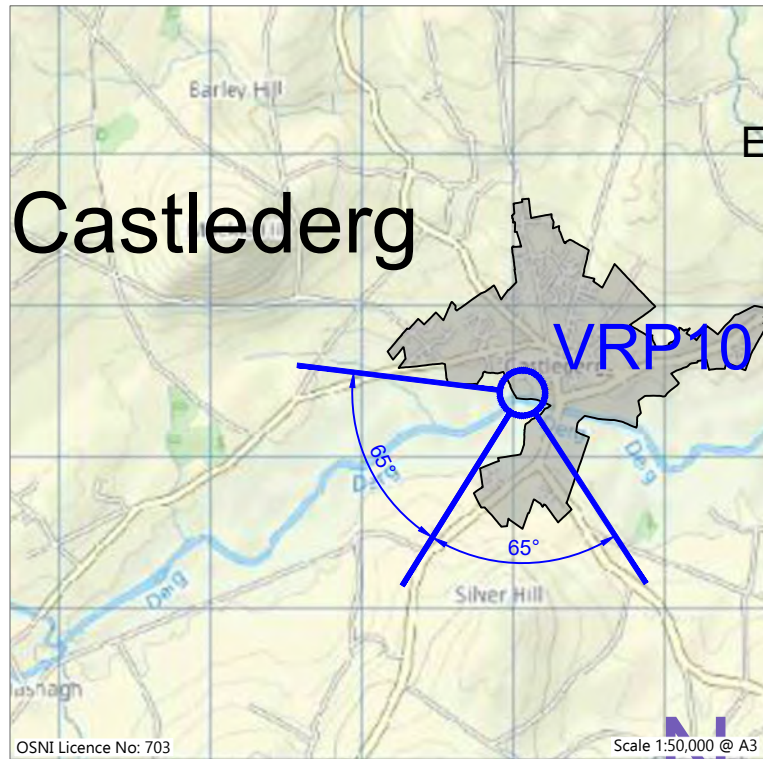
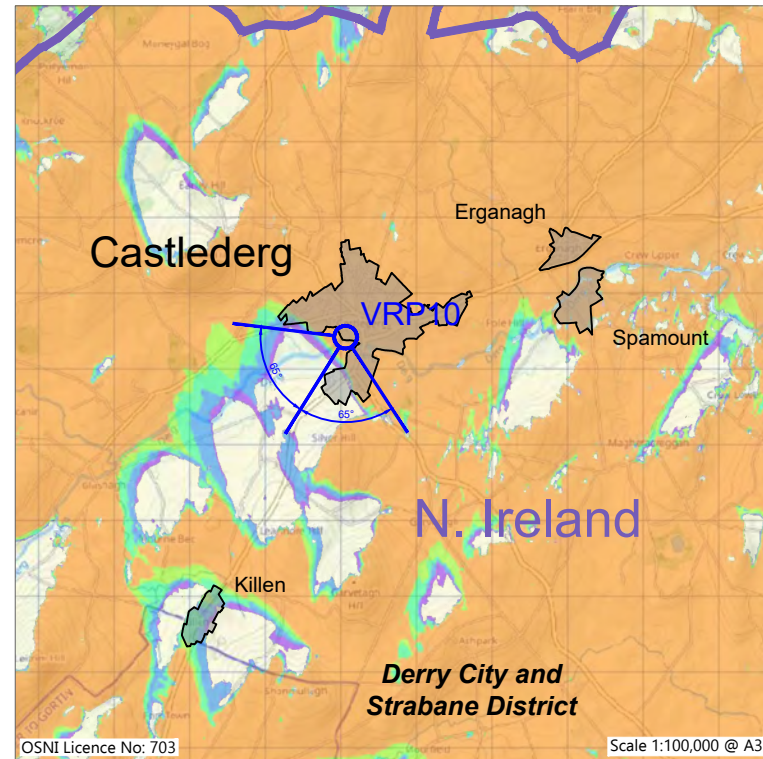


Photograph VRP10: Baseline photography 150 degrees (for context only)



VRP10 Location Map



ZTV01: Zone of Theoretical Visibility for Slieveglass Ext. Turbines 150m Blade Tip Height, showing VRP10 Location

Proposed Slieveglass Extension Wind Turbines Visible at 150m Blade Tip Height

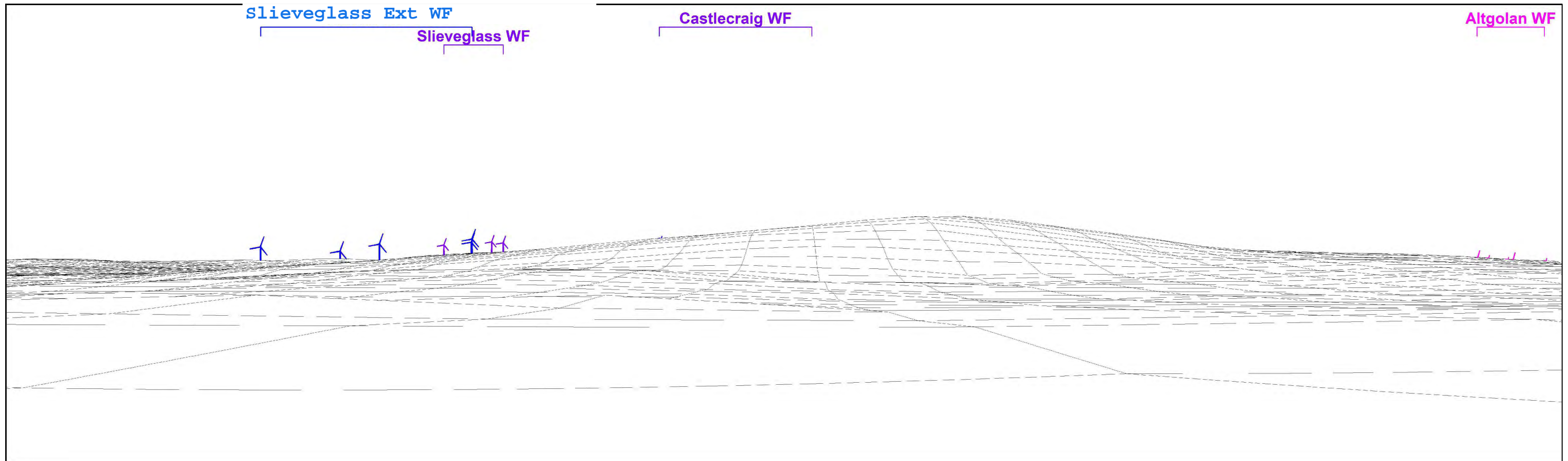
- 1 No. Wind Turbine Visible
- 2 No. Wind Turbines Visible
- 3 No. Wind Turbines Visible
- 4 No. Wind Turbines Visible
- 5 No. Wind Turbines Visible



VRP10 Camera Tripod Location Photography



Photomontage 10f: Scenario 3 (Left): Predicted Possible Future View (Operational, Under Construction, Permitted and Submitted wind farms, and Proposed Slieveglass Extension wind farm)



Wireframe 10f: Scenario 3 (Left): Predicted Possible Future View (Operational, Under Construction, Permitted and Submitted wind farms, and Proposed Slieveglass Extension wind farm)

Canavan Associates Ltd.
 Environmental Consultants, Ecologists, Ornithologists
 Chartered Town Planners and Registered Architects
www.canavanassociates.com info@canavanassociates.com

Viewpoint and image data:
 Direction to centre of view: 212°
 Included angle: 130° (65°+65°) (Cylindrical Projection)
 Image Size: 2 No. 400mm x 118mm (9,126 x 2,693 Pixels)
 Principal Distance: 353mm
 Rendered Turbine Wind Direction: 255°

Predicted theoretical visibility of Proposed wind turbine on wireframe: Distance to nearest wind turbine: 7,424m
 Nearest Wind Turbine: T1
 blade tips theoretically visible: 5
 hubs theoretically visible: 5

Proposed Slieveglass Ext Wind Farm:
 Turbine Layout: TL12
 Max Hub height: 91.5m
 Max Rotor Dia: 117m
 Max Tip height: 150m

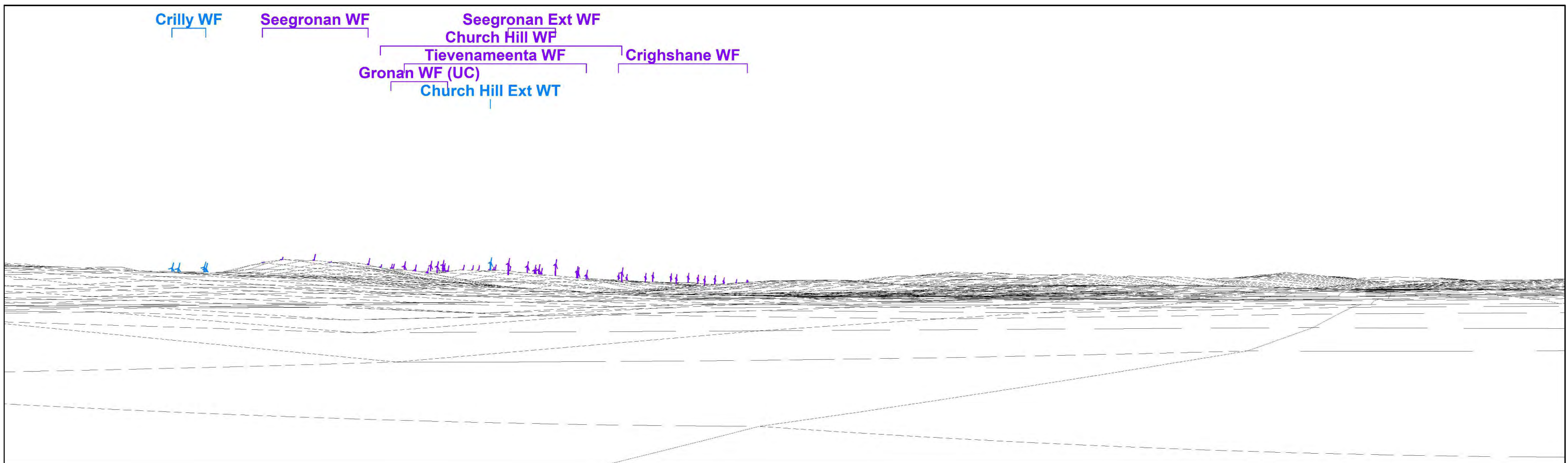
Wind turbines visible on wireframe:

- Proposed Wind Turbines
- Operational Wind Turbines
- Under Construction Wind Turbines (Gronan)
- Permitted Wind Turbines (Exc. Altgolan & Clunahill)
- Submitted Wind Turbines (Inc. Altgolan & Clunahill)


Slieveglass Extension Wind Farm
VRP10: Davies Castle Park, Castledearg (Left)
 Figure VRP10f-L: Scenario 3 (Left): Predicted Possible Future View (Operational, Under Construction, Permitted and Submitted wind farms, and Proposed wind farm)

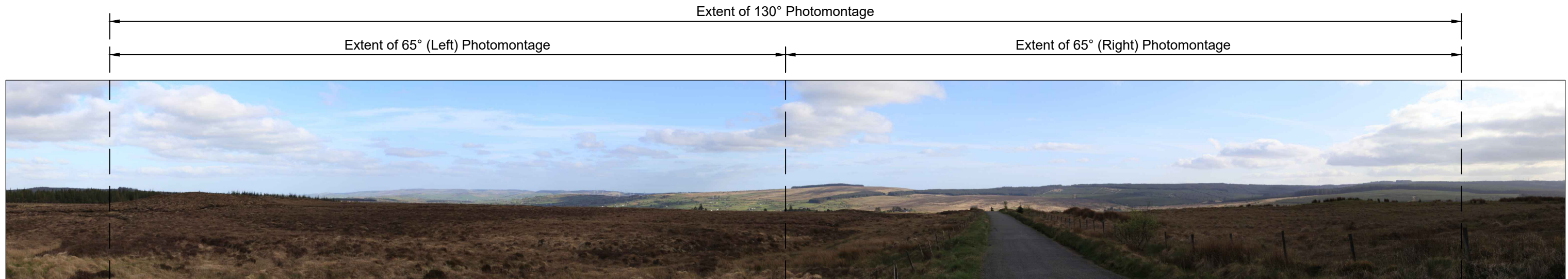


Photomontage 10f: Scenario 3 (Right): Predicted Possible Future View (Operational, Under Construction, Permitted and Submitted wind farms, and Proposed Slieveglass Extension wind farm)

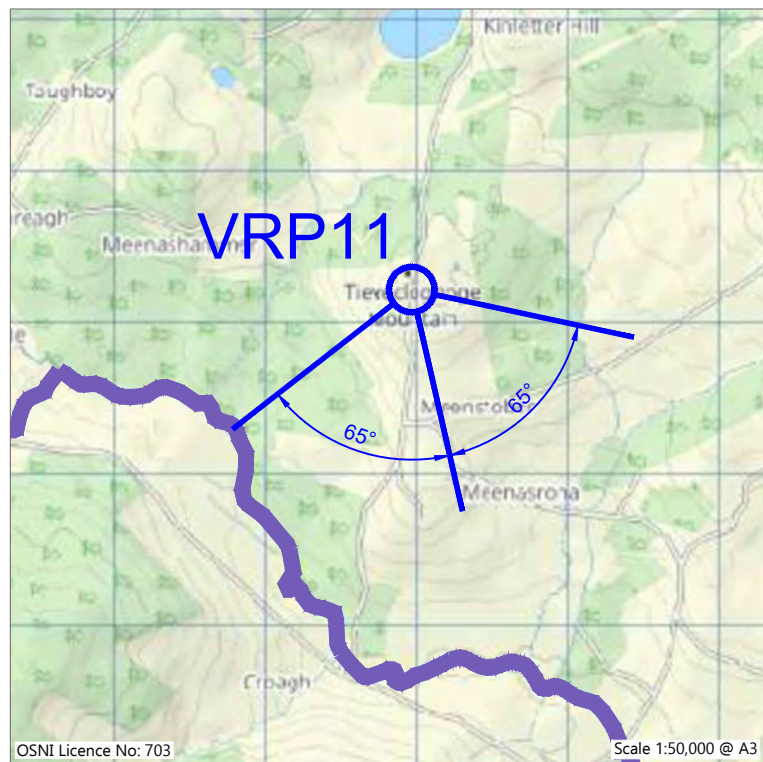


Wireframe 10f: Scenario 3 (Right): Predicted Possible Future View (Operational, Under Construction, Permitted and Submitted wind farms, and Proposed Slieveglass Extension wind farm)

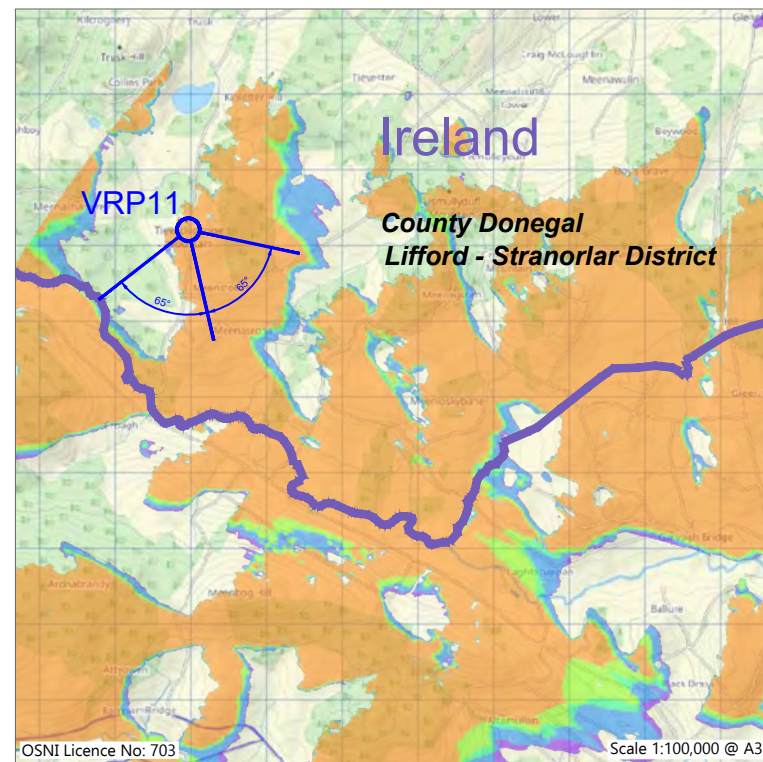
<p>Canavan Associates Ltd. Environmental Consultants, Ecologists, Ornithologists Chartered Town Planners and Registered Architects www.canavanassociates.com info@canavanassociates.com</p> 	<p>Viewpoint and image data: Direction to centre of view: 212° Included angle: 130° (65°+65°) (Cylindrical Projection) Image Size: 2 No. 400mm x 118mm (9,126 x 2,693 Pixels) Principal Distance: 353mm Rendered Turbine Wind Direction: 255°</p>	<p>Predicted theoretical visibility of Proposed wind turbine on wireframe: Distance to nearest wind turbine: 7,424m Nearest Wind Turbine: T1 blade tips theoretically visible: 5 hubs theoretically visible: 5</p>	<p>Proposed Slieveglass Ext Wind Farm: Turbine Layout: TL12 Max Hub height: 91.5m Max Rotor Dia: 117m Max Tip height: 150m</p>	<p>Wind turbines visible on wireframe:</p> <ul style="list-style-type: none"> ■ Proposed Wind Turbines ■ Operational Wind Turbines ■ Under Construction Wind Turbines (Gronan) ■ Permitted Wind Turbines (Exc. Altgolan & Clunahill) ■ Submitted Wind Turbines (Inc. Altgolan & Clunahill) 	<p>Slieveglass Extension Wind Farm</p> <p>VRP10: Davies Castle Park, Castlederg (Right) Figure VRP10f-L: Scenario 3 (Right): Predicted Possible Future View (Operational, Under Construction, Permitted and Submitted wind farms, and Proposed wind farm)</p>
--	--	---	---	---	---



Photograph VRP11: Baseline photography 150 degrees (for context only)



VRP11 Location Map



ZTV01: Zone of Theoretical Visibility for Slieveglass Extension Turbines 150m Blade Tip Height, showing VRP11 Location


Proposed Slieveglass Extension Wind Turbines Visible at 150m Blade Tip Height

- 1 No. Wind Turbine Visible
- 2 No. Wind Turbines Visible
- 3 No. Wind Turbines Visible
- 4 No. Wind Turbines Visible
- 5 No. Wind Turbines Visible



VRP11 Camera Tripod Location Photography

Canavan Associates Ltd.
Environmental Consultants, Ecologists, Ornithologists
Chartered Town Planners and Registered Architects
www.canavanassociates.com info@canavanassociates.com



Viewpoint and image data:
Location: 212963,388210 (OSNI IGR TM75 EPSG:29903)
Elevation: 203m AOD
Direction to centre of view: 167.1°
Included angle: 130° (65°+65°) (Cylindrical Projection)

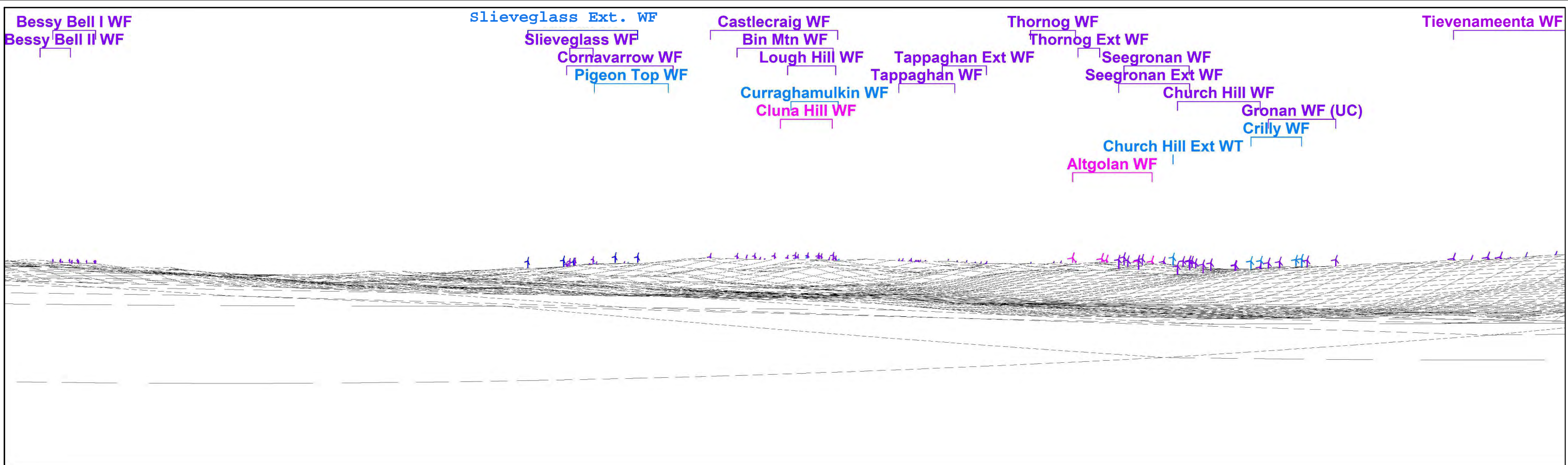
Camera and Photo data:
Camera: Canon EOS 5D MkII
Lens: Canon EF 50mm 1:1.4
Camera Height: 1.5 AGL
Date & Time: 01/05/2025 @ 17:15
Lighting: Weak Sunlight

Slieveglass Extension Wind Farm

VRP11: Minor road on Tieveclohoge Mountain
Figure VRP11: Viewpoint Information Overview



Photomontage 11f: Scenario 3 (Left): Predicted Possible Future View (Operational, Under Construction, Permitted and Submitted wind farms, and Proposed Slieveglass Extension wind farm)



Wireframe 11f: Scenario 3 (Left): Predicted Possible Future View (Operational, Under Construction, Permitted and Submitted wind farms, and Proposed Slieveglass Extension wind farm)

Canavan Associates Ltd.
 Environmental Consultants, Ecologists, Ornithologists
 Chartered Town Planners and Registered Architects
www.canavanassociates.com info@canavanassociates.com

Viewpoint and image data:
 Direction to centre of view: 167.1°
 Included angle: 130° (65°+65°) (Cylindrical Projection)
 Image Size: 2 No. 400mm x 118mm (9,126 x 2,693 Pixels)
 Principal Distance: 353mm
 Rendered Turbine Wind Direction: 255°

Predicted theoretical visibility of Proposed wind turbine on wireframe:
 Distance to nearest wind turbine: 18,783m
 Nearest Wind Turbine: T1
 blade tips theoretically visible: 5
 hubs theoretically visible: 5

Proposed Wind Farm:
 Turbine Layout: TL12
 Max Hub height: 91.5m
 Max Rotor Dia: 117m
 Max Tip height: 150m

Wind turbines visible on wireframe:

- Proposed Wind Turbines Operational Wind
- Turbines
- Under Construction Wind Turbines (Gronan)
- Permitted Wind Turbines (Exc. Altgolan & Clunahill)
- Submitted Wind Turbines (Inc. Altgolan & Clunahill)

Slieveglass Extension Wind Farm

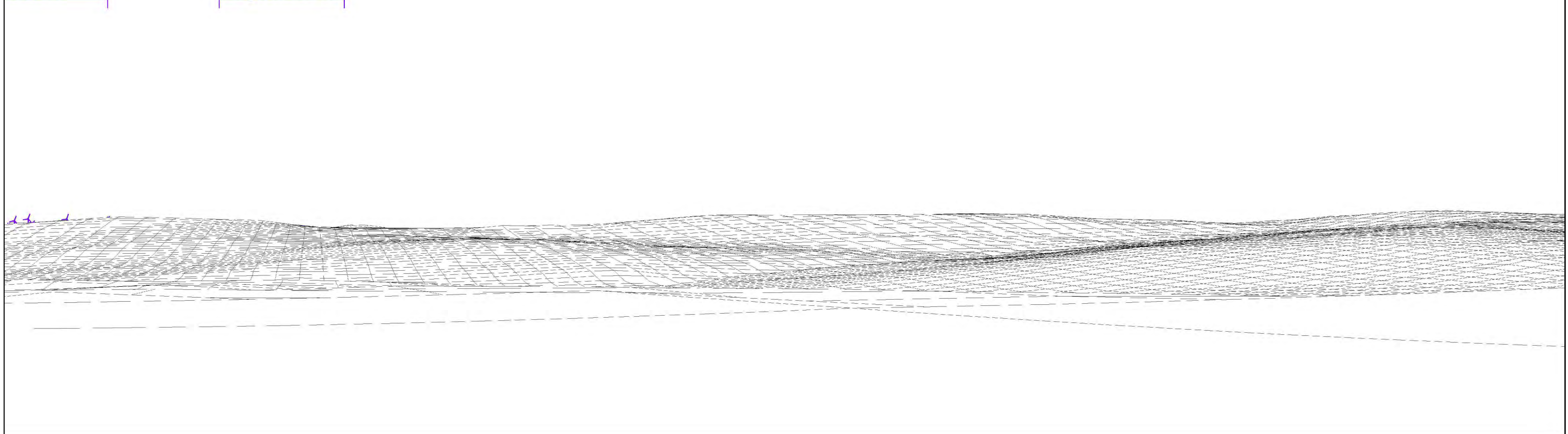
VRP11: Minor road on Tievecloghoge Mountain (Left)
 Figure VRP11f-L: Scenario 3 (Left): Predicted Possible Future View (Operational, Under Construction, Permitted and Submitted wind farms, and Proposed wind farm)



Photomontage 11f: Scenario 3 (Right): Predicted Possible Future View (Operational, Under Construction, Permitted and Submitted wind farms, and Proposed Slieveglass Extension wind farm)

Tievenameenta WF

Crighshane WF



Wireframe 11f: Scenario 3 (Right): Predicted Possible Future View (Operational, Under Construction, Permitted and Submitted wind farms, and Proposed Slieveglass Extension wind farm)

Canavan Associates Ltd.
Environmental Consultants, Ecologists, Ornithologists
Chartered Town Planners and Registered Architects
www.canavanassociates.com info@canavanassociates.com



Viewpoint and image data:

Direction to centre of view: 167.1°
Included angle: 130° (65°+65°) (Cylindrical Projection)
Image Size: 2 No. 400mm x 118mm (9,126 x 2,693 Pixels)
Principal Distance: 353mm
Rendered Turbine Wind Direction: 255°

Predicted theoretical visibility of Proposed wind turbine on wireframe:

Distance to nearest wind turbine: 18,783m
Nearest Wind Turbine: T1
blade tips theoretically visible: 5
hubs theoretically visible: 5

Proposed Wind Farm:

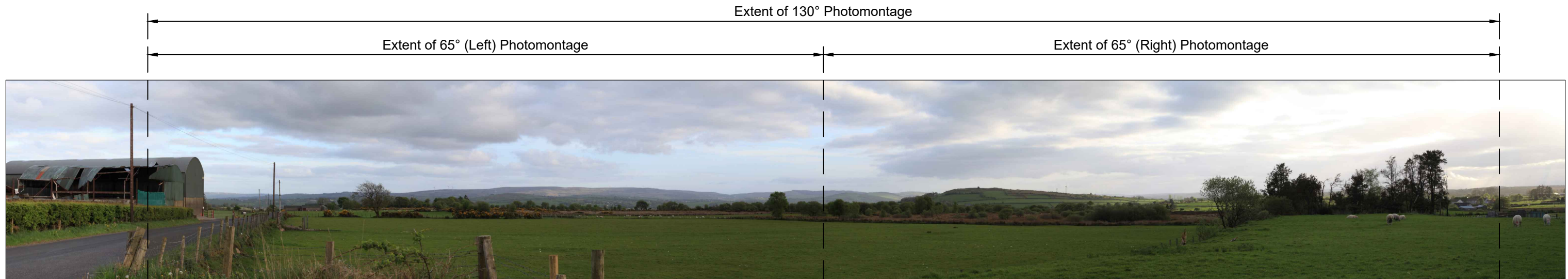
Turbine Layout: TL12
Max Hub height: 91.5m
Max Rotor Dia: 117m
Max Tip height: 150m

Wind turbines visible on wireframe:

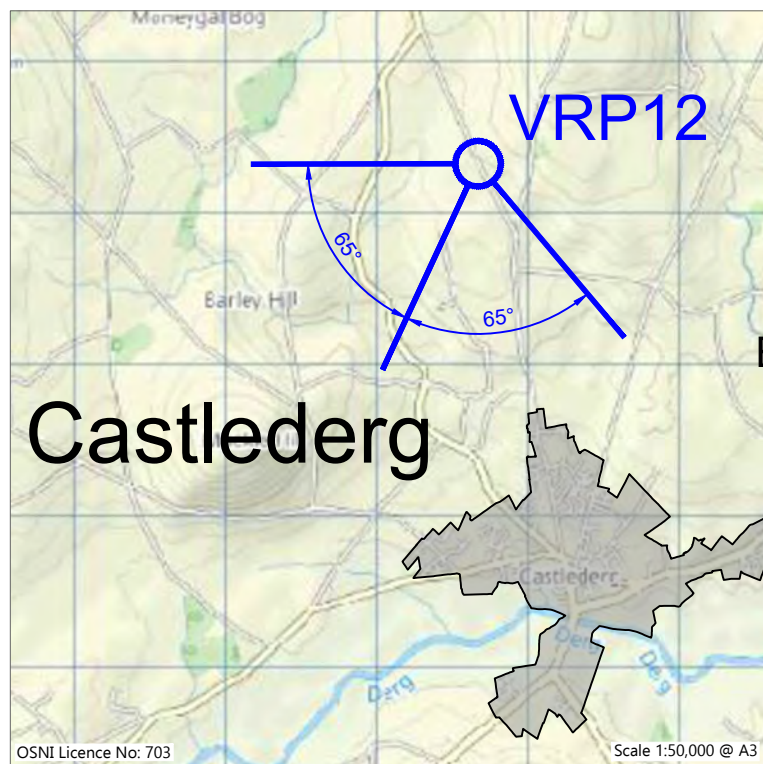
- Proposed Wind Turbines
- Operational Wind Turbines
- Under Construction Wind Turbines (Gronan)
- Permitted Wind Turbines (Exc. Altgolan & Clunahill)
- Submitted Wind Turbines (Inc. Altgolan & Clunahill)

Slieveglass Extension Wind Farm

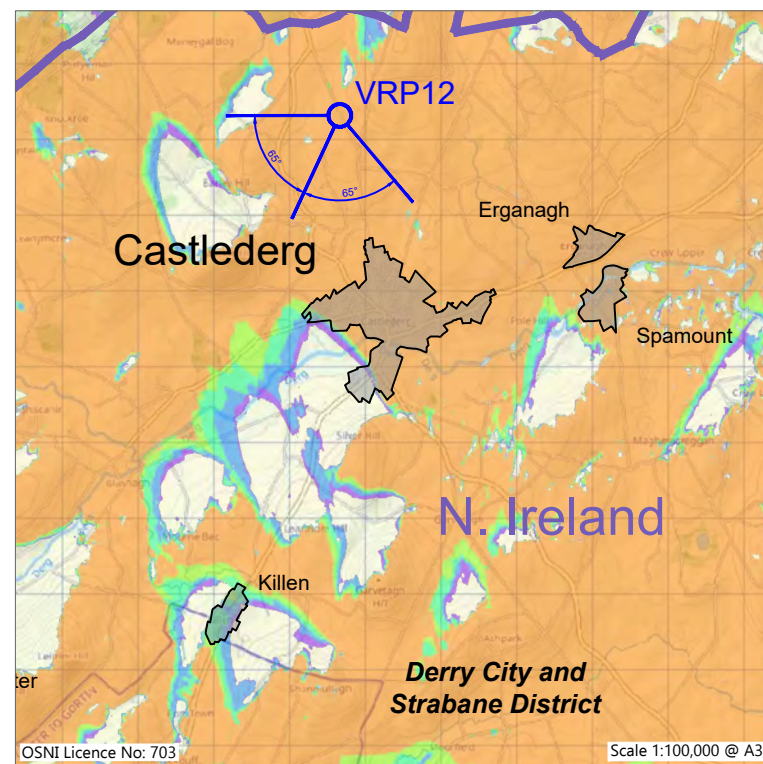
VRP11: Minor road on Tievecloghoge Mountain (Right)
Figure VRP11f-R: Scenario 3 (Right): Predicted Possible Future View (Operational, Under Construction, Permitted and Submitted wind farms, and Proposed wind farm)



Photograph VRP12: Baseline photography 150 degrees (for context only)



VRP12 Location Map



ZTV01: Zone of Theoretical Visibility for SG Ext. Turbines 150m Blade Tip Height, showing VRP12 Location

Proposed Slieveglass Extension Wind Turbines Visible at 150m Blade Tip Height

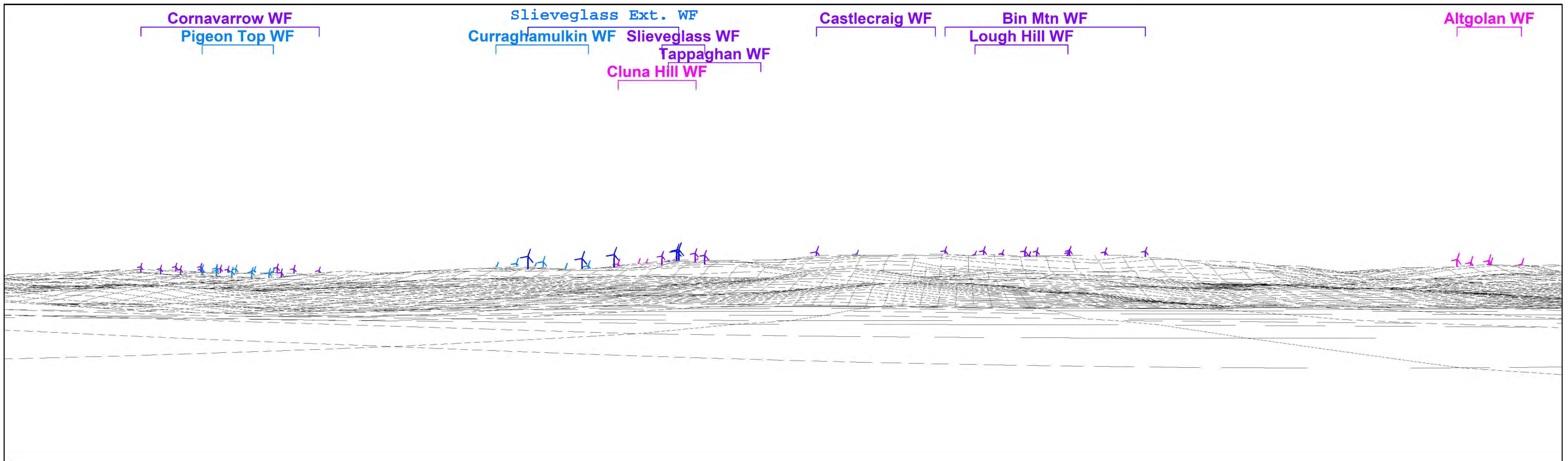
- 1 No. Wind Turbine Visible
- 2 No. Wind Turbines Visible
- 3 No. Wind Turbines Visible
- 4 No. Wind Turbines Visible
- 5 No. Wind Turbines Visible




VRP12 Camera Tripod Location Photography



Photomontage 12f: Scenario 3 (Left): Predicted Possible Future View (Operational, Under Construction, Permitted and Submitted wind farms, and Proposed Slieveglass Extension wind farm)

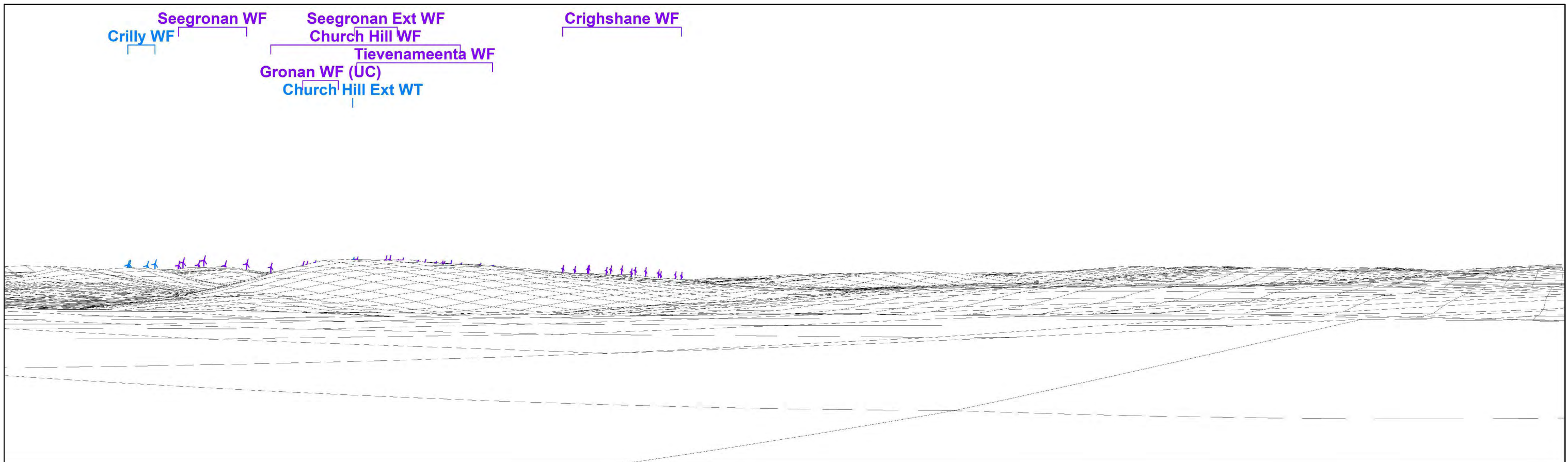


Wireframe 12f: Scenario 3 (Left): Predicted Possible Future View (Operational, Under Construction, Permitted and Submitted wind farms, and Proposed Slieveglass Extension wind farm)


<p>Canavan Associates Ltd. Environmental Consultants, Ecologists, Ornithologists Chartered Town Planners and Registered Architects www.canavanassociates.com info@canavanassociates.com</p> 	<p>Viewpoint and image data: Direction to centre of view: 204.9° Included angle: 130° (65°+65°) (Cylindrical Projection) Image Size: 2 No. 400mm x 118mm (9,126 x 2,693 Pixels) Principal Distance: 353mm Rendered Turbine Wind Direction: 255°</p>	<p>Predicted theoretical visibility of Proposed wind turbine on wireframe: Distance to nearest wind turbine: 10,324m Nearest Wind Turbine: T1 blade tips theoretically visible: 5 hubs theoretically visible: 5</p>	<p>Proposed Wind Farm: Turbine Layout: TL12 Max Hub height: 91.5m Max Rotor Dia: 117m Max Tip height: 150m</p>	<p>Wind turbines visible on wireframe:</p> <ul style="list-style-type: none"> ■ Proposed Wind Turbines ■ Operational Wind Turbines ■ Under Construction Wind Turbines (Gronan) ■ Permitted Wind Turbines (Exc. Altgolan & Clunahill) ■ Submitted Wind Turbines (Inc. Altgolan & Clunahill) 	<p>Slieveglass Extension Wind Farm</p> <p>VRP12: Castlefin Road at Freughlough (Left) Figure VRP12f-L: Scenario 3 (Left): Predicted Possible Future View (Operational, Under Construction, Permitted and Submitted wind farms, and Proposed wind farm)</p>
--	--	--	---	---	--

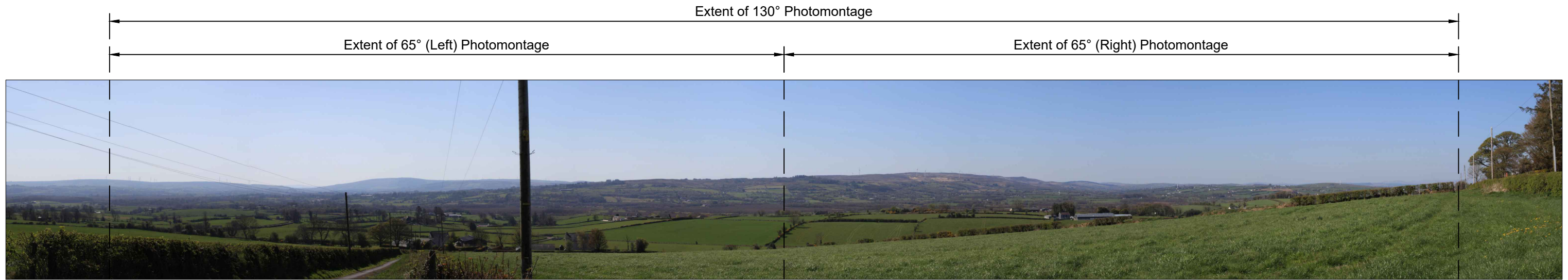


Photomontage 12f: Scenario 3 (Right): Predicted Possible Future View (Operational, Under Construction, Permitted and Submitted wind farms, and Proposed Slieveglass Extension wind farm)

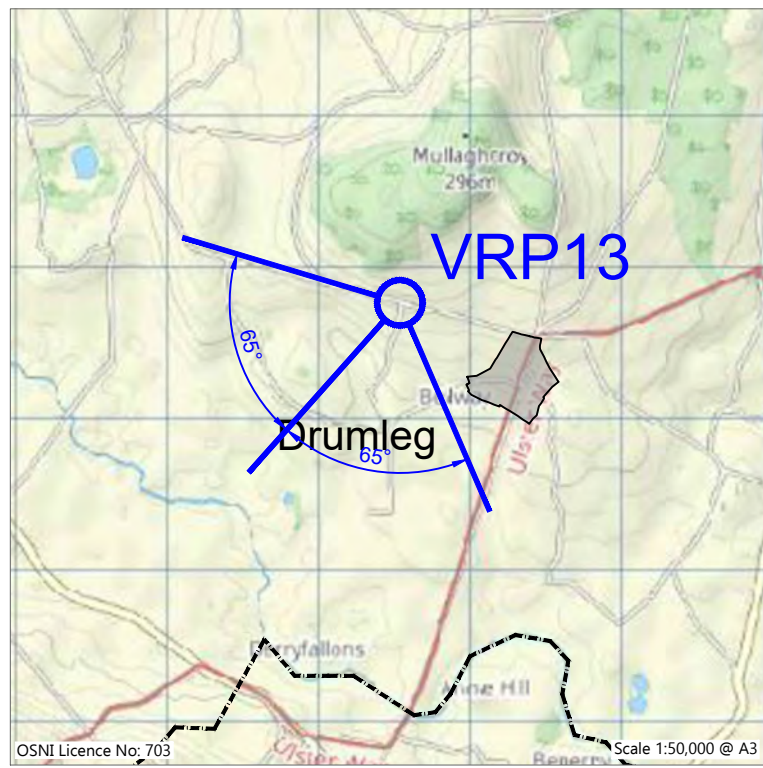


Wireframe 12f: Scenario 3 (Right): Predicted Possible Future View (Operational, Under Construction, Permitted and Submitted wind farms, and Proposed Slieveglass Extension wind farm)

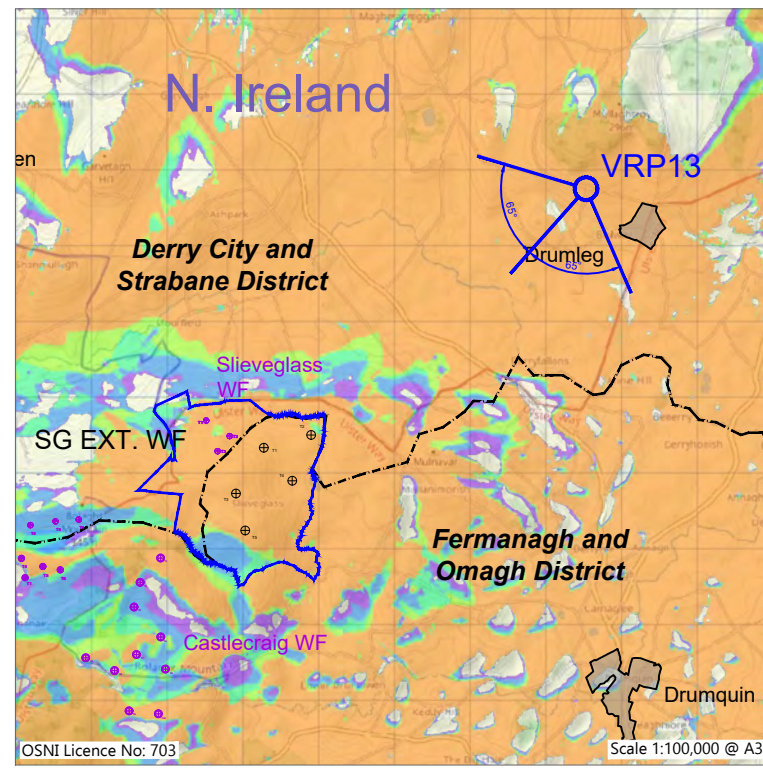
<p>Canavan Associates Ltd. Environmental Consultants, Ecologists, Ornithologists Chartered Town Planners and Registered Architects www.canavanassociates.com info@canavanassociates.com</p> 	<p>Viewpoint and image data: Direction to centre of view: 204.9° Included angle: 130° (65°+65°) (Cylindrical Projection) Image Size: 2 No. 400mm x 118mm (9,126 x 2,693 Pixels) Principal Distance: 353mm Rendered Turbine Wind Direction: 255°</p>	<p>Predicted theoretical visibility of Proposed wind turbine on wireframe: Distance to nearest wind turbine: 10,324m Nearest Wind Turbine: T1 blade tips theoretically visible: 5 hubs theoretically visible: 5</p>	<p>Proposed Wind Farm: Turbine Layout: TL12 Max Hub height: 91.5m Max Rotor Dia: 117m Max Tip height: 150m</p>	<p>Wind turbines visible on wireframe:</p> <ul style="list-style-type: none"> ■ Proposed Wind Turbines ■ Operational Wind Turbines ■ Under Construction Wind Turbines (Gronan) ■ Permitted Wind Turbines (Exc. Altgolan & Clunahill) ■ Submitted Wind Turbines (Inc. Altgolan & Clunahill) 	<p>Slieveglass Extension Wind Farm</p> <p>VRP12: Castlefin Road at Freughlough (Right) Figure VRP12f-L: Scenario 3 (Right): Predicted Possible Future View (Operational, Under Construction, Permitted and Submitted wind farms, and Proposed wind farm)</p>
--	--	--	---	---	--



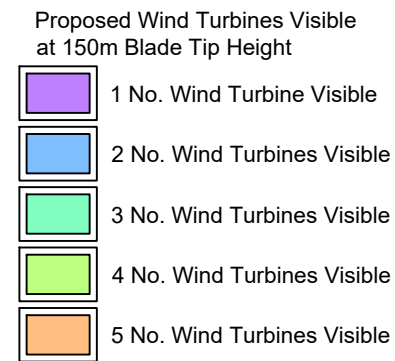
Photograph VRP13: Baseline photography 150 degrees (for context only)



VRP13 Location Map



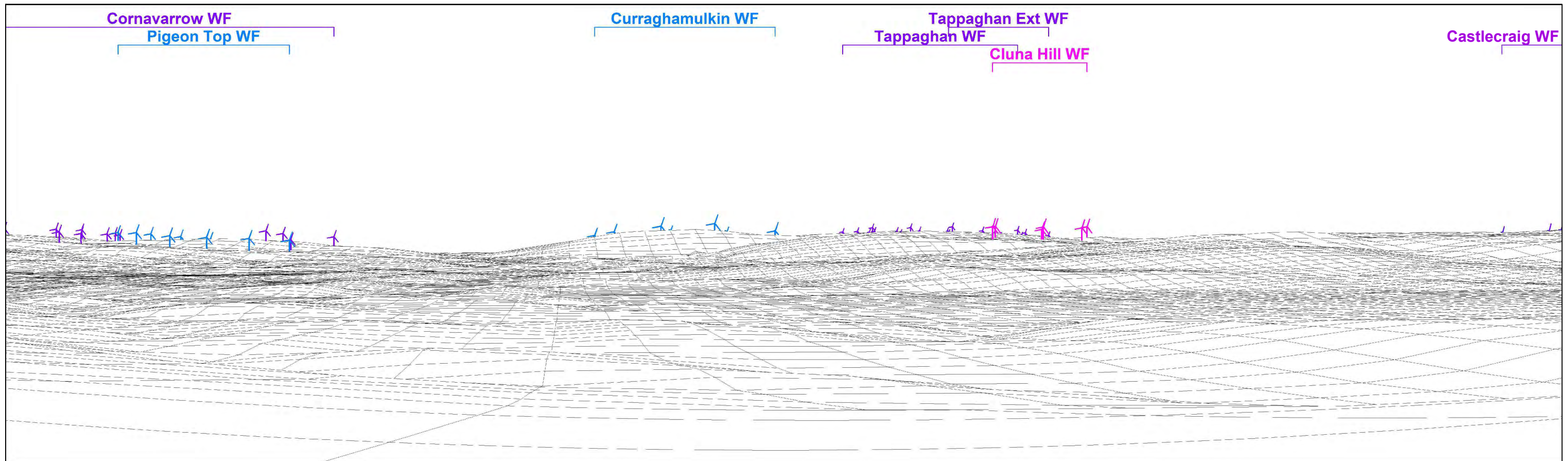
ZTV01: Zone of Theoretical Visibility for Proposed Turbines 150m Blade Tip Height, showing VRP13 Location




VRP13 Camera Tripod Location Photography



Photomontage 13f: Scenario 3 (Left): Predicted Possible Future View (Operational, Under Construction, Permitted and Submitted wind farms, and Proposed Slieveglass Extension wind farm)

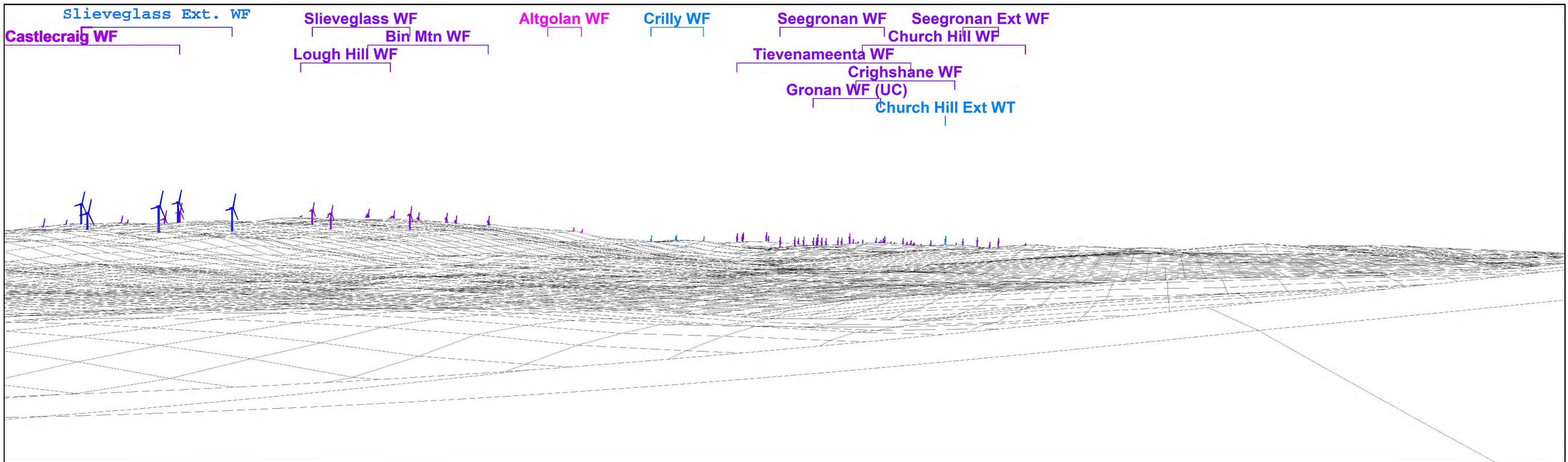


Wireframe 13f: Scenario 3 (Left): Predicted Possible Future View (Operational, Under Construction, Permitted and Submitted wind farms, and Proposed Slieveglass Extension wind farm)

<p>Canavan Associates Ltd. Environmental Consultants, Ecologists, Ornithologists Chartered Town Planners and Registered Architects www.canavanassociates.com info@canavanassociates.com</p> 	<p>Viewpoint and image data: Direction to centre of view: 221.7° Included angle: 130° (65°+65°) (Cylindrical Projection) Image Size: 2 No. 400mm x 118mm (9,126 x 2,693 Pixels) Principal Distance: 353mm Rendered Turbine Wind Direction: 255°</p>	<p>Predicted theoretical visibility of Proposed wind turbine on wireframe: Distance to nearest wind turbine: 4,880m Nearest Wind Turbine: T2 blade tips theoretically visible: 5 hubs theoretically visible: 5</p>	<p>Proposed Wind Farm: Turbine Layout: TL12 Max Hub height: 91.5m Max Rotor Dia: 117m Max Tip height: 150m</p>	<p>Wind turbines visible on wireframe:</p> <ul style="list-style-type: none"> ■ Proposed Wind Turbines ■ Operational Wind Turbines ■ Under Construction Wind Turbines (Gronan) ■ Permitted Wind Turbines (Exc. Altgolan & Clunahill) ■ Submitted Wind Turbines (Inc. Altgolan & Clunahill) 	<p>Slieveglass Extension Wind Farm</p> <p>VRP13: Magheracreggan Road west of Drumlegagh (Left) Figure VRP13f-L: Scenario 3 (Left): Predicted Possible Future View (Operational, Under Construction, Permitted and Submitted wind farms, and Proposed wind farm)</p>
--	--	---	---	---	---




Photomontage 13f: Scenario 3 (Right): Predicted Possible Future View (Operational, Under Construction, Permitted and Submitted wind farms, and Proposed Slieveglass Extension wind farm)



Wireframe 13f: Scenario 3 (Right): Predicted Possible Future View (Operational, Under Construction, Permitted and Submitted wind farms, and Proposed Slieveglass Extension wind farm)

Canavan Associates Ltd.
 Environmental Consultants, Ecologists, Ornithologists
 Chartered Town Planners and Registered Architects
www.canavanassociates.com info@canavanassociates.com



Viewpoint and image data:
 Direction to centre of view: 221.7°
 Included angle: 130° (65°+65°) (Cylindrical Projection)
 Image Size: 2 No. 400mm x 118mm (9,126 x 2,693 Pixels)
 Principal Distance: 353mm
 Rendered Turbine Wind Direction: 255°

Predicted theoretical visibility of Proposed wind turbine on wireframe:
 Distance to nearest wind turbine: 4,880m
 Nearest Wind Turbine: T2
 blade tips theoretically visible: 5
 hubs theoretically visible: 5

Proposed Wind Farm:
 Turbine Layout: TL12
 Max Hub height: 91.5m
 Max Rotor Dia: 117m
 Max Tip height: 150m

Wind turbines visible on wireframe:

- Proposed Wind Turbines
- Operational Wind Turbines
- Under Construction Wind Turbines (Gronan)
- Permitted Wind Turbines (Exc. Altgolan & Clunahill)
- Submitted Wind Turbines (Inc. Altgolan & Clunahill)

Slieveglass Extension Wind Farm
VRP13: Magheracreggan Road west of Drumlegagh (Right)
 Figure VRP13f-R: Scenario 3 (Right): Predicted Possible Future View (Operational, Under Construction, Permitted and Submitted wind farms, and Proposed wind farm)

