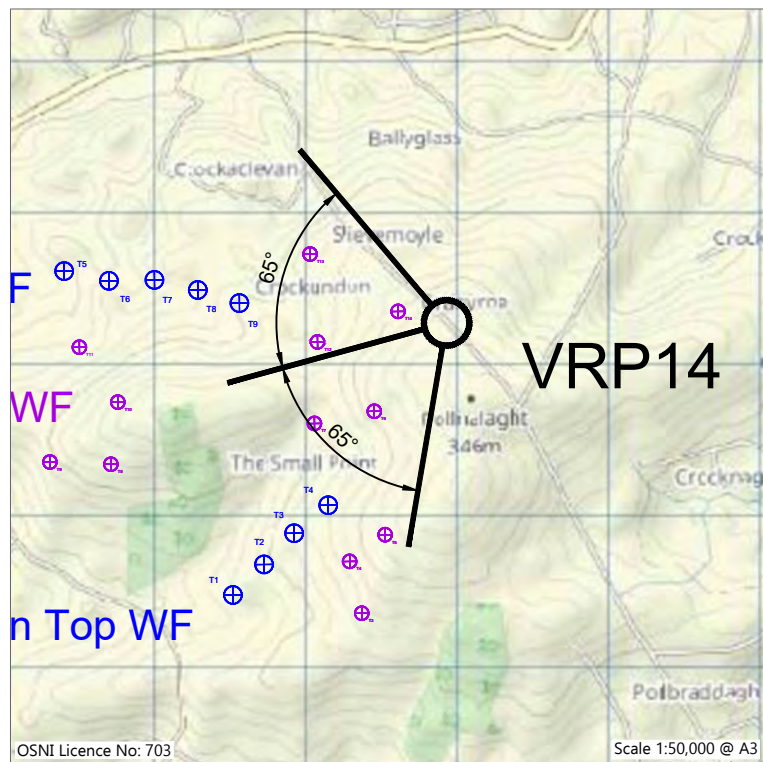
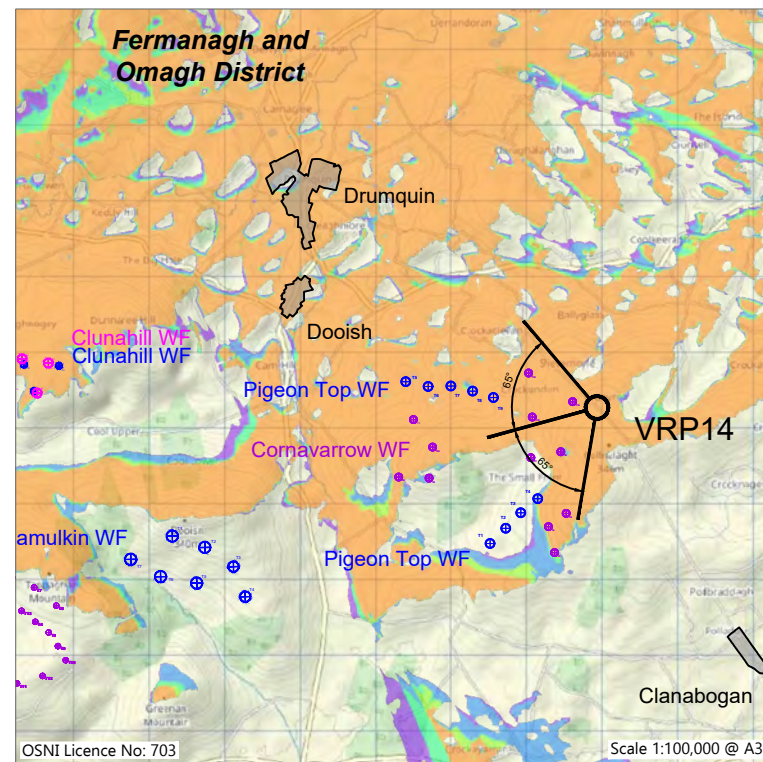


Photograph VRP14: Baseline photography 150 degrees (for context only)



VRP14 Location Map



ZTV01: Zone of Theoretical Visibility for Slieveglass Extension Turbines 150m Blade Tip Height, showing VRP14 Location

Proposed Slieveglass Extension Wind Turbines Visible at 150m Blade Tip Height

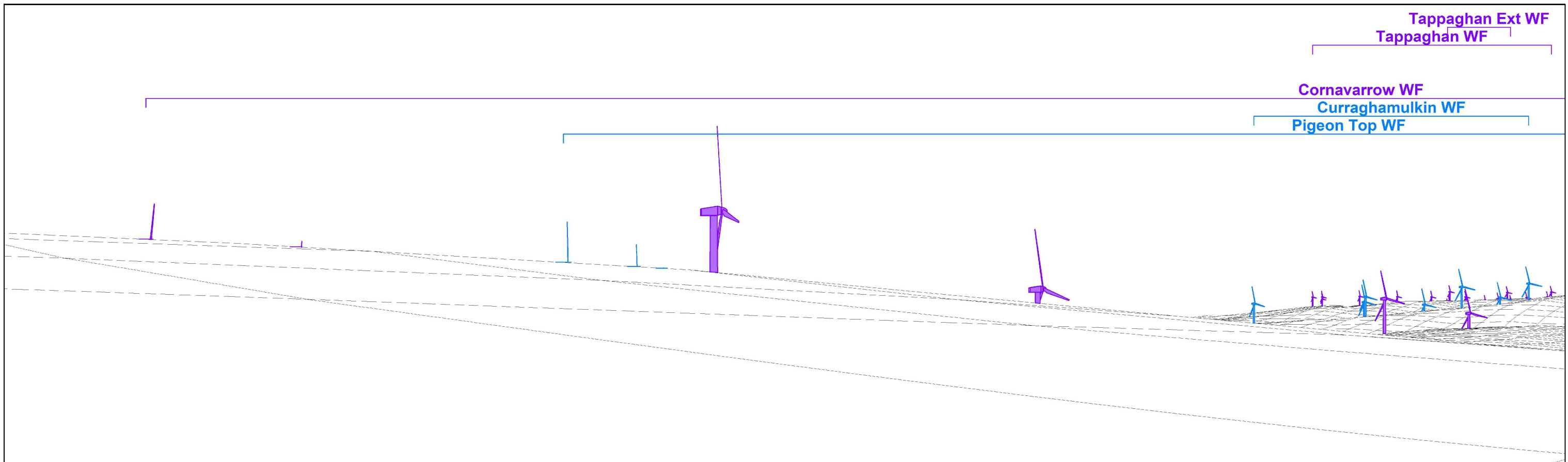
- 1 No. Wind Turbine Visible
- 2 No. Wind Turbines Visible
- 3 No. Wind Turbines Visible
- 4 No. Wind Turbines Visible
- 5 No. Wind Turbines Visible




VRP14 Camera Tripod Location Photography



Photomontage 14f: Scenario 3 (Left): Predicted Possible Future View (Operational, Under Construction, Permitted and Submitted wind farms, and Proposed Slieveglass Extension wind farm)

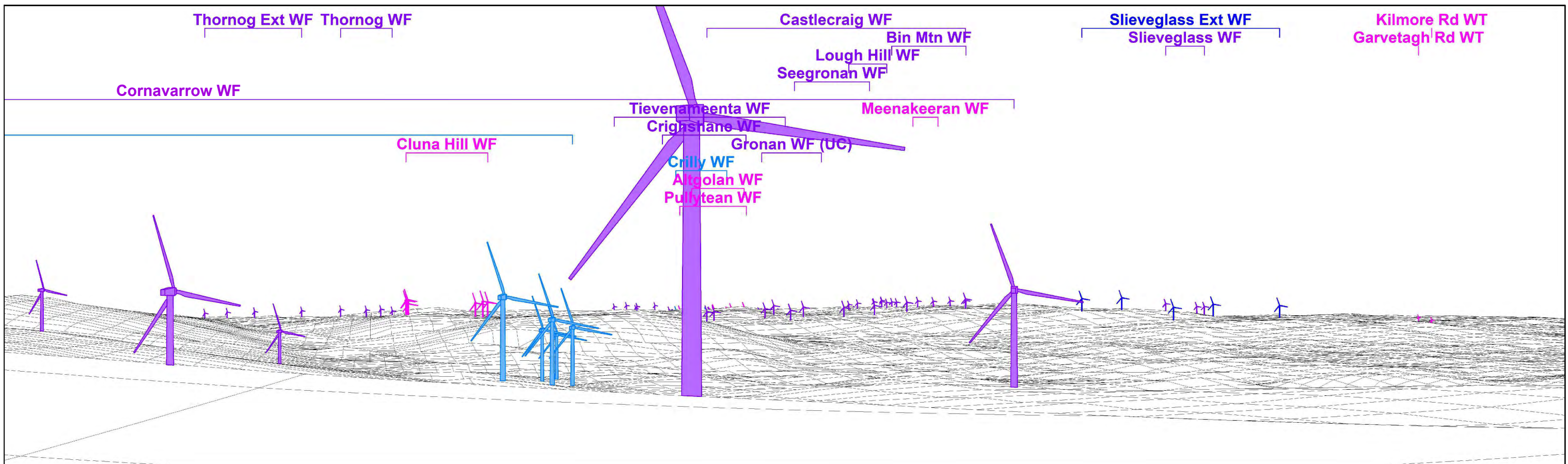


Wireframe 14f: Scenario 3 (Left): Predicted Possible Future View (Operational, Under Construction, Permitted and Submitted wind farms, and Proposed Slieveglass Extension wind farm)

<p>Canavan Associates Ltd. Environmental Consultants, Ecologists, Ornithologists Chartered Town Planners and Registered Architects www.canavanassociates.com info@canavanassociates.com</p> 	<p>Viewpoint and image data: Direction to centre of view: 254.7° Included angle: 130° (65°+65°) (Cylindrical Projection) Image Size: 2 No. 400mm x 118mm (9,126 x 2,693 Pixels) Principal Distance: 353mm Rendered Turbine Wind Direction: 300°</p>	<p>Predicted theoretical visibility of Proposed Slieveglass Extension wind turbine on wireframe: Distance to nearest Slieveglass Ext wind turbine: 9,796m Nearest Slieveglass Ext Wind Turbine: T4 blade tips theoretically visible: 5 hubs theoretically visible: 5</p>	<p>Proposed Slieveglass Extension Wind Farm: Turbine Layout: TL16 Max Hub height: 91.5m Max Rotor Dia: 117m Max Tip height: 150m</p>	<p>Wind turbines visible on wireframe:</p> <ul style="list-style-type: none"> □ Proposed Slieveglass Extension Wind Turbines □ Operational Wind Turbines □ Under Construction Wind Turbines (Gronan) □ Permitted Wind Turbines (Exc. Altgolan & Clunahill) □ Submitted Wind Turbines (Inc. Altgolan & Clunahill) 	<p>Slieveglass Extension Wind Farm</p> <p>VRP14: Pollnalaght Hill (Left) Figure VRP14f-L: Scenario 3 (Left): Predicted Possible Future View (Operational, Under Construction, Permitted and Submitted wind farms, and Proposed Slieveglass Extension wind farm)</p>
--	--	---	---	---	---




Photomontage 14f: Scenario 3 (Right): Predicted Possible Future View (Operational, Under Construction, Permitted and Submitted wind farms, and Proposed Slieveglass Extension wind farm)



Wireframe 14f: Scenario 3 (Right): Predicted Possible Future View (Operational, Under Construction, Permitted and Submitted wind farms, and Proposed Slieveglass Extension wind farm)

Canavan Associates Ltd.
 Environmental Consultants, Ecologists, Ornithologists
 Chartered Town Planners and Registered Architects
www.canavanassociates.com info@canavanassociates.com



Viewpoint and image data:
 Direction to centre of view: 254.7°
 Included angle: 130° (65°+65°) (Cylindrical Projection)
 Image Size: 2 No. 400mm x 118mm (9,126 x 2,693 Pixels)
 Principal Distance: 353mm
 Rendered Turbine Wind Direction: 300°

Predicted theoretical visibility of Proposed Slieveglass Extension wind turbine on wireframe:
 Distance to nearest Slieveglass Ext wind turbine: 9,796m
 Nearest Slieveglass Ext Wind Turbine: T4
 blade tips theoretically visible: 5
 hubs theoretically visible: 5

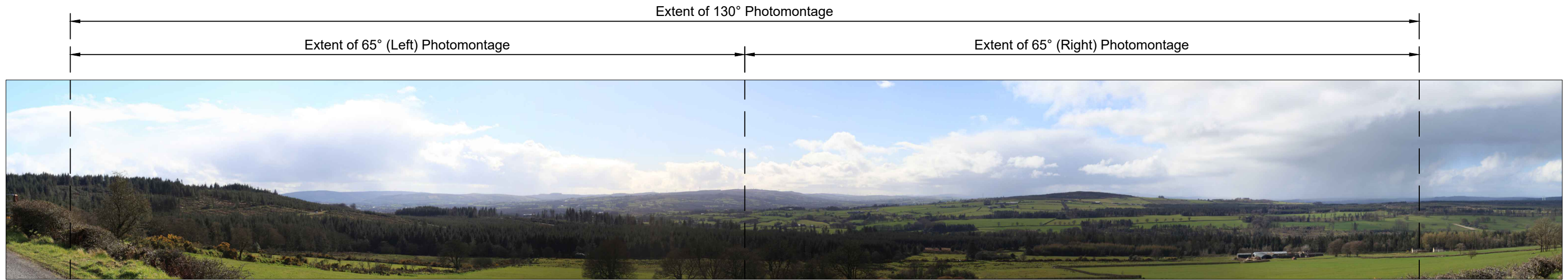
Proposed Slieveglass Extension Wind Farm:
 Turbine Layout: TL16
 Max Hub height: 91.5m
 Max Rotor Dia: 117m
 Max Tip height: 150m

Wind turbines visible on wireframe:

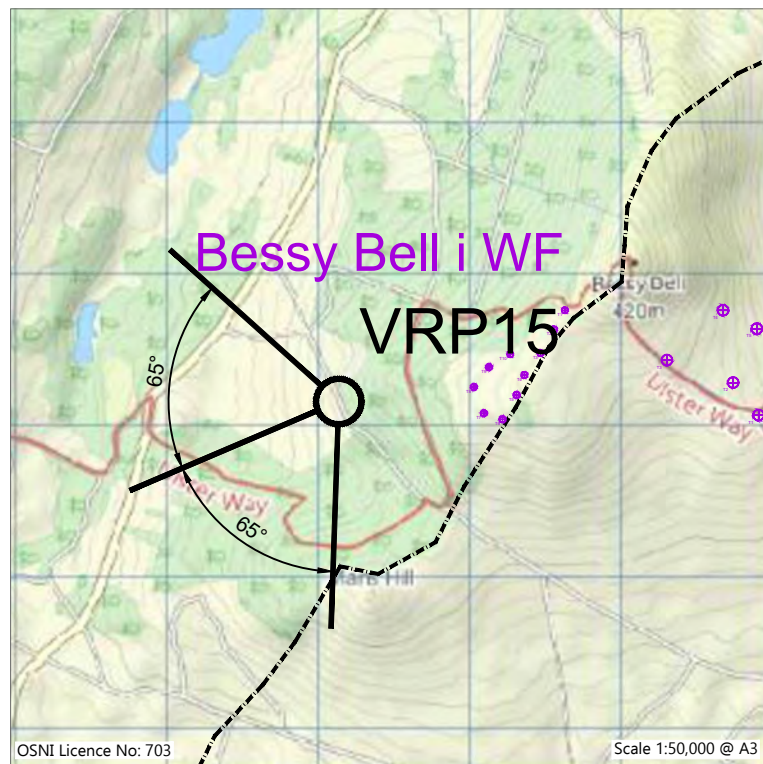
- Proposed Slieveglass Extension Wind Turbines
- Operational Wind Turbines
- Under Construction Wind Turbines (Gronan)
- Permitted Wind Turbines (Exc. Altgolan & Clunahill)
- Submitted Wind Turbines (Inc. Altgolan & Clunahill)

Slieveglass Extension Wind Farm

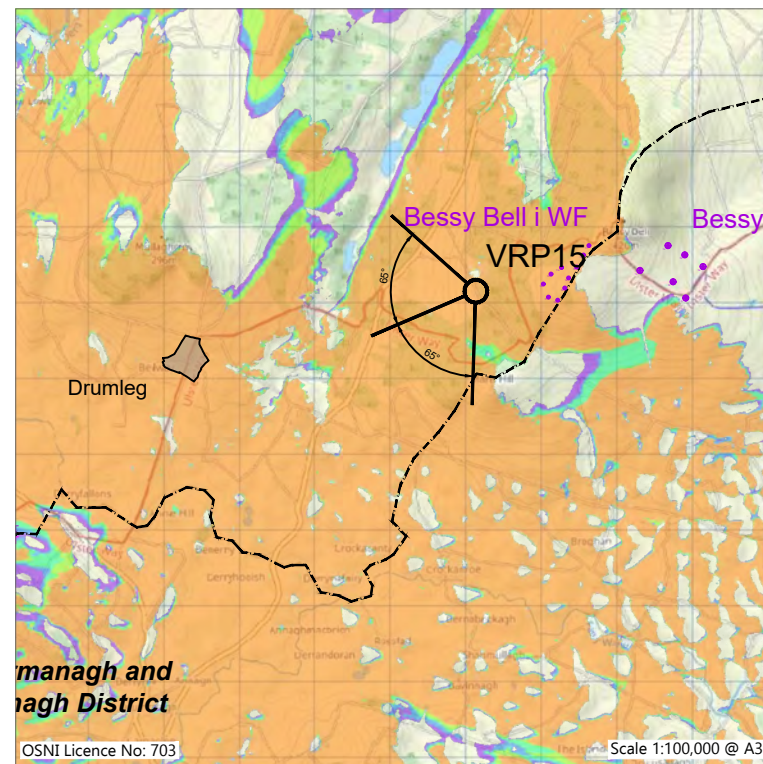
VRP14: Pollnalaght Hill (Right)
 Figure VRP14f-R: Scenario 3 (Right): Predicted Possible Future View (Operational, Under Construction, Permitted and Submitted wind farms, and Proposed Slieveglass Extension wind farm)



Photograph VRP15: Baseline photography 150 degrees (for context only)



VRP15 Location Map



ZTV01: Zone of Theoretical Visibility for Slieveglass Extension Turbines 150m Blade Tip Height, showing VRP15 Location

Proposed Slieveglass Extension Wind Turbines Visible at 150m Blade Tip Height

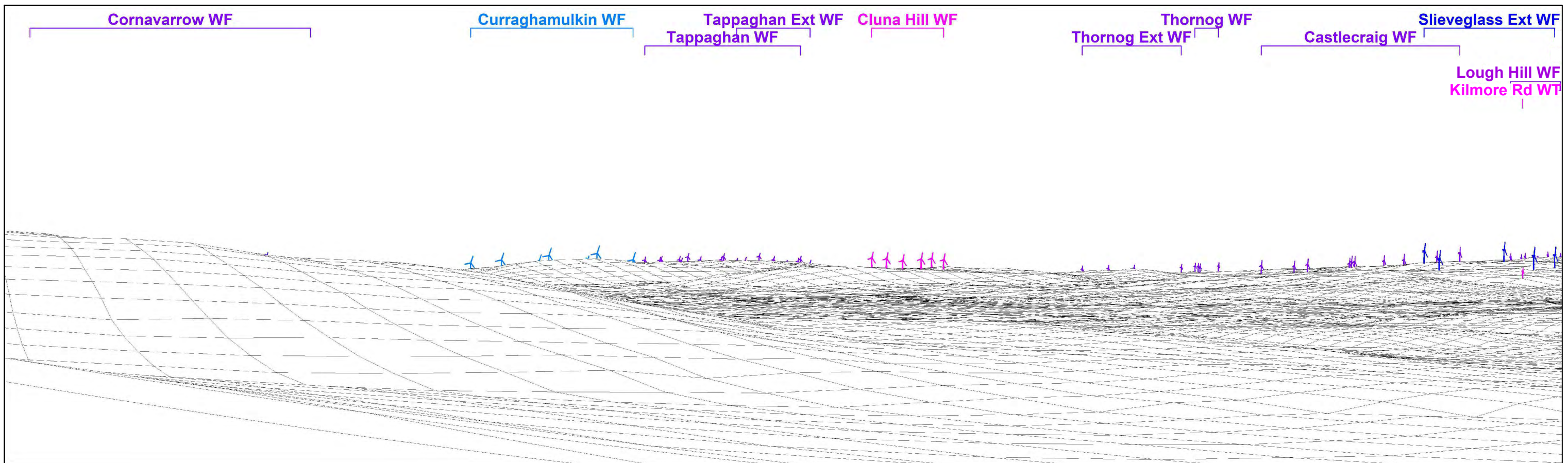
- 1 No. Wind Turbine Visible
- 2 No. Wind Turbines Visible
- 3 No. Wind Turbines Visible
- 4 No. Wind Turbines Visible
- 5 No. Wind Turbines Visible



VRP15 Camera Tripod Location Photography




Photomontage 15f: Scenario 3 (Left): Predicted Possible Future View (Operational, Under Construction, Permitted and Submitted wind farms, and Proposed Slieveglass Extension wind farm)



Wireframe 15f: Scenario 3 (Left): Predicted Possible Future View (Operational, Under Construction, Permitted and Submitted wind farms, and Proposed Slieveglass Extension wind farm)

Canavan Associates Ltd.
 Environmental Consultants, Ecologists, Ornithologists
 Chartered Town Planners and Registered Architects
www.canavanassociates.com info@canavanassociates.com



Viewpoint and image data:
 Direction to centre of view: 246.95°
 Included angle: 130° (65°+65°) (Cylindrical Projection)
 Image Size: 2 No. 400mm x 118mm (9,126 x 2,693 Pixels)
 Principal Distance: 353mm
 Rendered Turbine Wind Direction: 350°

Predicted theoretical visibility of Proposed Slieveglass Extension wind turbine on wireframe:
 Distance to nearest Slieveglass Ext wind turbine: 8,984m
 Nearest Slieveglass Ext Wind Turbine: T2
 blade tips theoretically visible: 5
 hubs theoretically visible: 5

Proposed Slieveglass Extension Wind Farm:
 Turbine Layout: TL16
 Max Hub height: 91.5m
 Max Rotor Dia: 117m
 Max Tip height: 150m

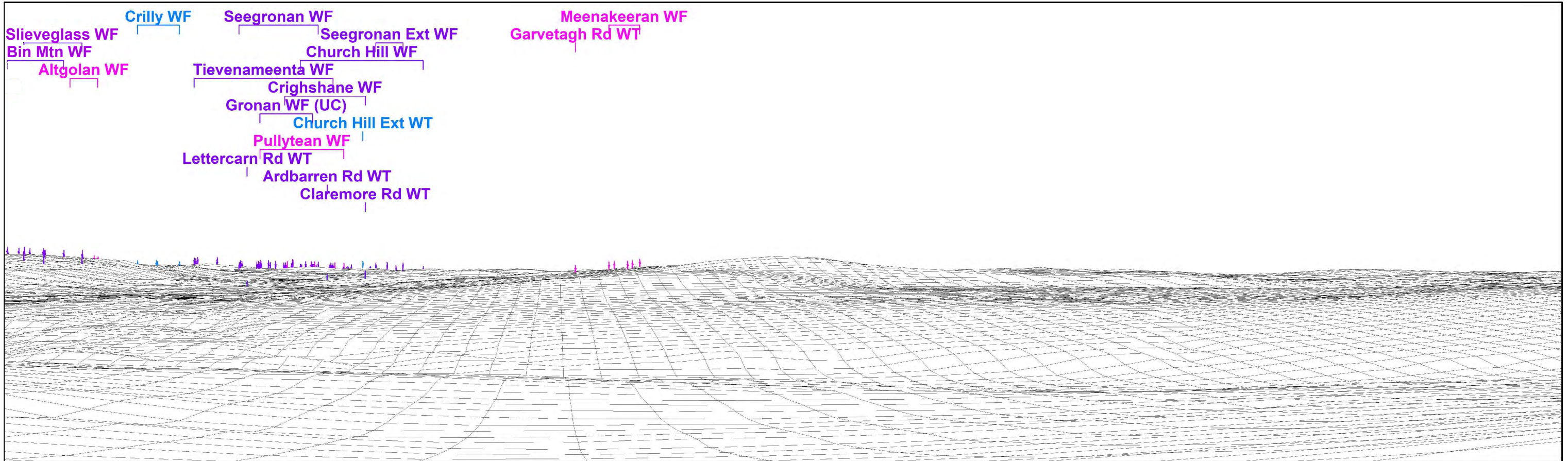
Wind turbines visible on wireframe:

- Proposed Slieveglass Extension Wind Turbines
- Operational Wind Turbines
- Under Construction Wind Turbines (Gronan)
- Permitted Wind Turbines (Exc. Altgolan & Clunahill)
- Submitted Wind Turbines (Inc. Altgolan & Clunahill)

Slieveglass Extension Wind Farm
VRP15: Cashty Road at entrance to quarry (Left)
 Figure VRP15f-L: Scenario 3 (Left): Predicted Possible Future View (Operational, Under Construction, Permitted and Submitted wind farms, and Proposed Slieveglass Extension wind farm)



Photomontage 15f: Scenario 3 (Right): Predicted Possible Future View (Operational, Under Construction, Permitted and Submitted wind farms, and Proposed Slieveglass Extension wind farm)



Wireframe 15f: Scenario 3 (Right): Predicted Possible Future View (Operational, Under Construction, Permitted and Submitted wind farms, and Proposed Slieveglass Extension wind farm)

Canavan Associates Ltd.
 Environmental Consultants, Ecologists, Ornithologists
 Chartered Town Planners and Registered Architects
www.canavanassociates.com info@canavanassociates.com



Viewpoint and image data:
 Direction to centre of view: 246.95°
 Included angle: 130° (65°+65°) (Cylindrical Projection)
 Image Size: 2 No. 400mm x 118mm (9,126 x 2,693 Pixels)
 Principal Distance: 353mm
 Rendered Turbine Wind Direction: 350°

Predicted theoretical visibility of Proposed Slieveglass Extension wind turbine on wireframe:
 Distance to nearest Slieveglass Ext wind turbine: 8,984m
 Nearest Slieveglass Ext Wind Turbine: T2
 blade tips theoretically visible: 5
 hubs theoretically visible: 5

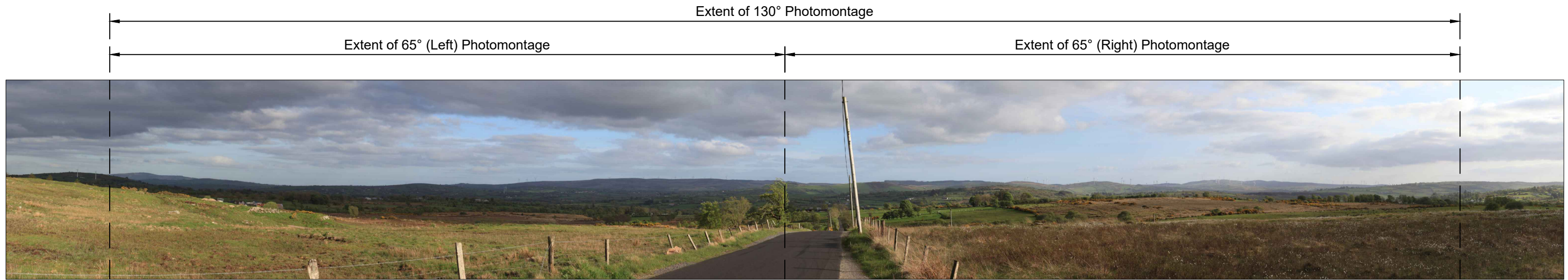
Proposed Slieveglass Extension Wind Farm:
 Turbine Layout: TL16
 Max Hub height: 91.5m
 Max Rotor Dia: 117m
 Max Tip height: 150m

Wind turbines visible on wireframe:

- Proposed Slieveglass Extension Wind Turbines
- Operational Wind Turbines
- Under Construction Wind Turbines (Gronan)
- Permitted Wind Turbines (Exc. Altgolan & Clunahill)
- Submitted Wind Turbines (Inc. Altgolan & Clunahill)

Slieveglass Extension Wind Farm

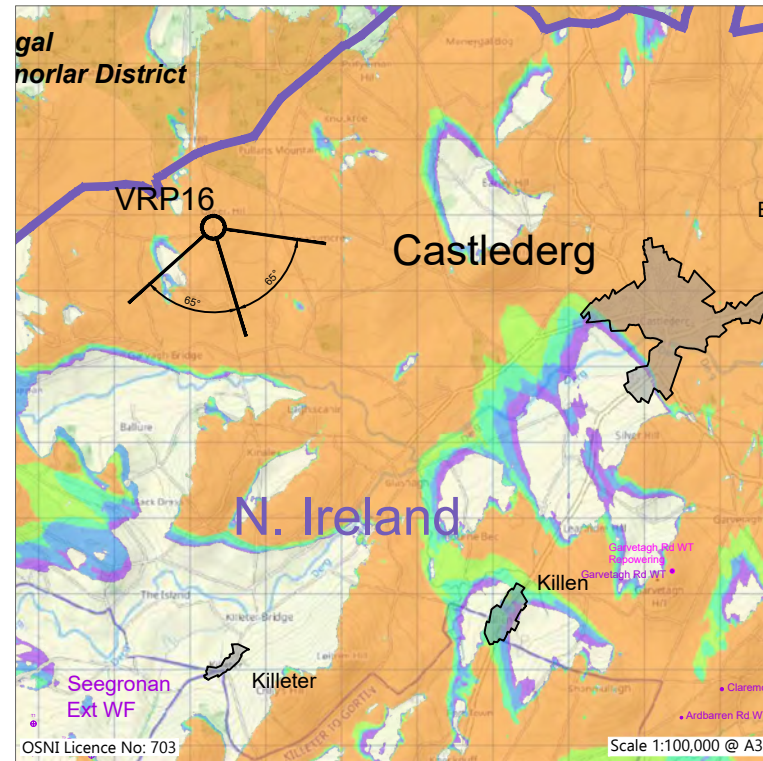
VRP15: Cashty Road at entrance to quarry (Right)
 Figure VRP15f-R: Scenario 3 (Right): Predicted Possible Future View (Operational, Under Construction, Permitted and Submitted wind farms, and Proposed Slieveglass Extension wind farm)



Photograph VRP16: Baseline photography 150 degrees (for context only)



VRP16 Location Map



ZTV01: Zone of Theoretical Visibility for Slieveglass Extension Turbines 150m Blade Tip Height, showing VRP16 Location

Proposed Slieveglass Extension Wind Turbines Visible at 150m Blade Tip Height

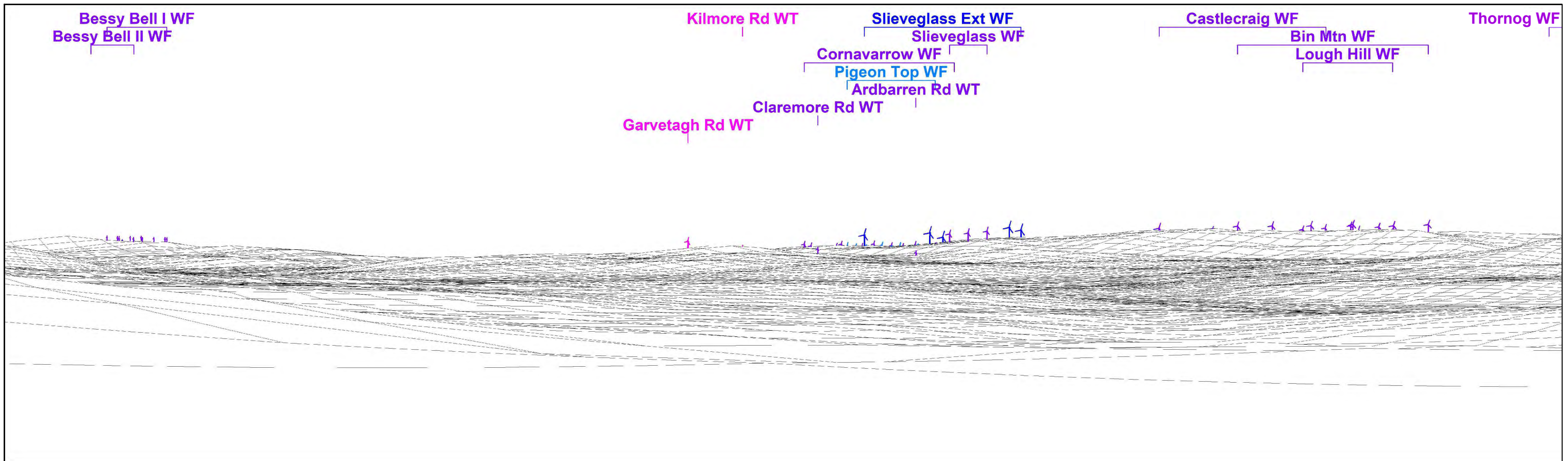
- 1 No. Wind Turbine Visible
- 2 No. Wind Turbines Visible
- 3 No. Wind Turbines Visible
- 4 No. Wind Turbines Visible
- 5 No. Wind Turbines Visible



VRP17 Camera Tripod Location Photography




Photomontage 16f: Scenario 3 (Left): Predicted Possible Future View (Operational, Under Construction, Permitted and Submitted wind farms, and Proposed Slieveglass Extension wind farm)



Wireframe 16f: Scenario 3 (Left): Predicted Possible Future View (Operational, Under Construction, Permitted and Submitted wind farms, and Proposed Slieveglass Extension wind farm)

Canavan Associates Ltd.
 Environmental Consultants, Ecologists, Ornithologists
 Chartered Town Planners and Registered Architects
www.canavanassociates.com info@canavanassociates.com



Viewpoint and image data:
 Direction to centre of view: 163.3°
 Included angle: 130° (65°+65°) (Cylindrical Projection)
 Image Size: 2 No. 400mm x 118mm (9,126 x 2,693 Pixels)
 Principal Distance: 353mm
 Rendered Turbine Wind Direction: 350°

Predicted theoretical visibility of Proposed Slieveglass Extension wind turbine on wireframe:
 Distance to nearest Slieveglass Ext wind turbine: 11,661m
 Nearest Slieveglass Ext Wind Turbine: T1
 blade tips theoretically visible: 5
 hubs theoretically visible: 5

Proposed Slieveglass Extension Wind Farm:
 Turbine Layout: TL16
 Max Hub height: 91.5m
 Max Rotor Dia: 117m
 Max Tip height: 150m

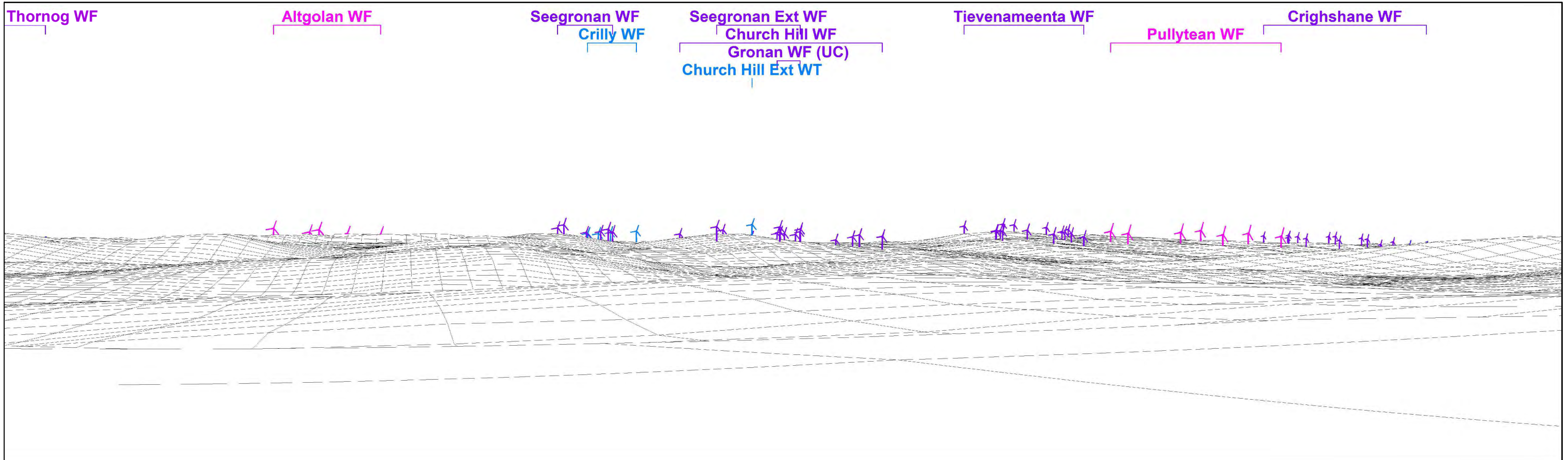
Wind turbines visible on wireframe:

- Proposed Slieveglass Extension Wind Turbines
- Operational Wind Turbines
- Under Construction Wind Turbines (Gronan)
- Permitted Wind Turbines (Exc. Altgolan & Clunahill)
- Submitted Wind Turbines (Inc. Altgolan & Clunahill)

Slieveglass Extension Wind Farm
VRP16: Carn Rd (Left)
 Figure VRP16f-L: Scenario 3 (Left): Predicted Possible Future View (Operational, Under Construction, Permitted and Submitted wind farms, and Proposed Slieveglass Extension wind farm)




Photomontage 16f: Scenario 3 (Right): Predicted Possible Future View (Operational, Under Construction, Permitted and Submitted wind farms, and Proposed Slieveglass Extension wind farm)



Wireframe 16f: Scenario 3 (Right): Predicted Possible Future View (Operational, Under Construction, Permitted and Submitted wind farms, and Proposed Slieveglass Extension wind farm)

Canavan Associates Ltd.
 Environmental Consultants, Ecologists, Ornithologists
 Chartered Town Planners and Registered Architects
www.canavanassociates.com info@canavanassociates.com



Viewpoint and image data:
 Direction to centre of view: 163.3°
 Included angle: 130° (65°+65°) (Cylindrical Projection)
 Image Size: 2 No. 400mm x 118mm (9,126 x 2,693 Pixels)
 Principal Distance: 353mm
 Rendered Turbine Wind Direction: 350°

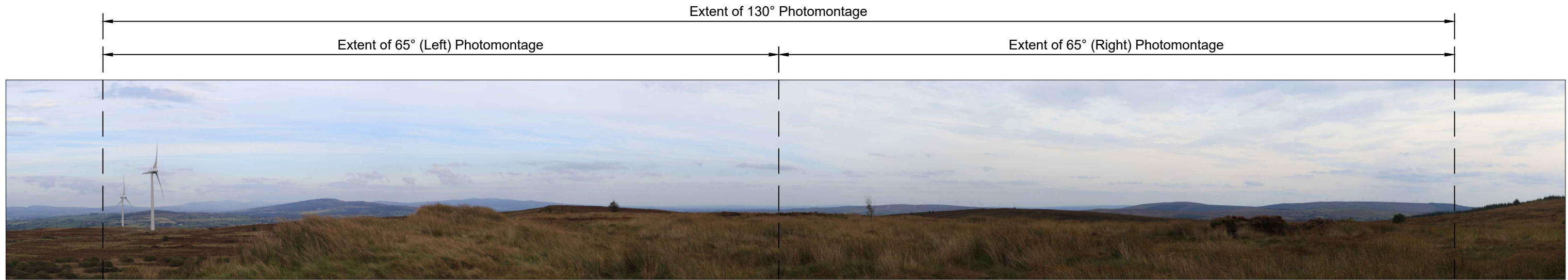
Predicted theoretical visibility of Proposed Slieveglass Extension wind turbine on wireframe:
 Distance to nearest Slieveglass Ext wind turbine: 11,661m
 Nearest Slieveglass Ext Wind Turbine: T1
 blade tips theoretically visible: 5
 hubs theoretically visible: 5

Proposed Slieveglass Extension Wind Farm:
 Turbine Layout: TL16
 Max Hub height: 91.5m
 Max Rotor Dia: 117m
 Max Tip height: 150m

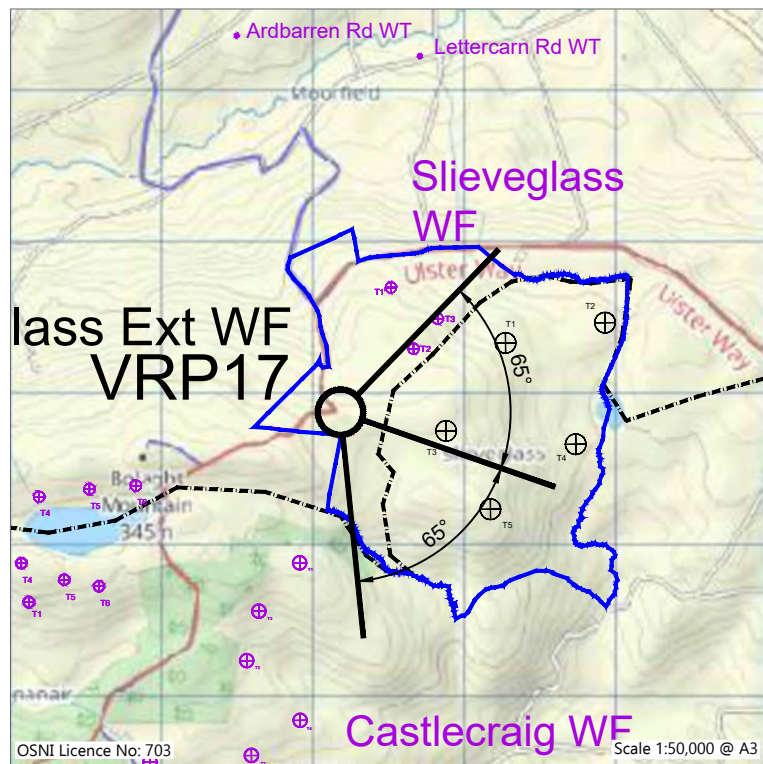
Wind turbines visible on wireframe:

- Proposed Slieveglass Extension Wind Turbines
- Operational Wind Turbines
- Under Construction Wind Turbines (Gronan)
- Permitted Wind Turbines (Exc. Altgolán & Clunahill)
- Submitted Wind Turbines (Inc. Altgolán & Clunahill)

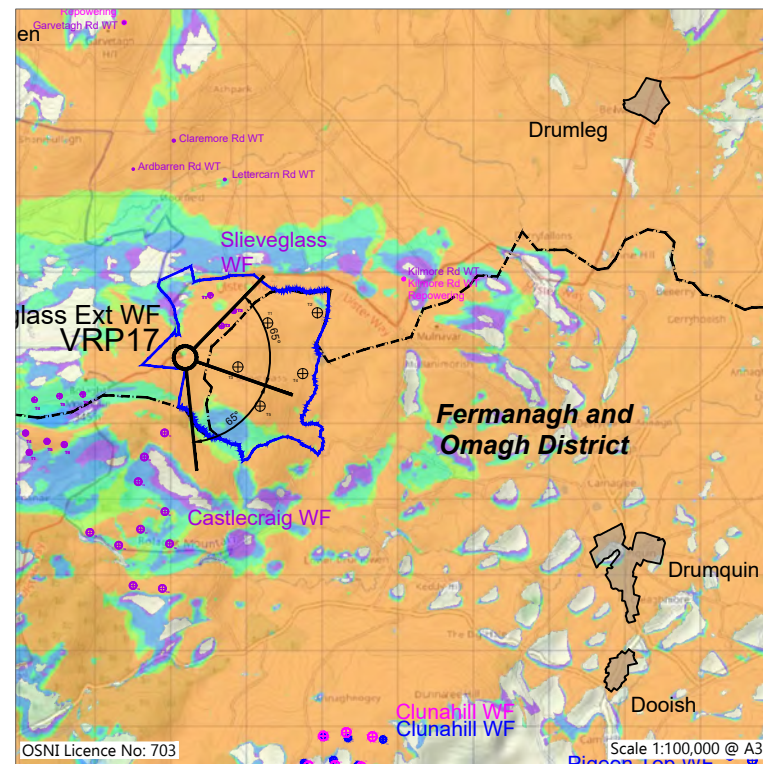
Slieveglass Extension Wind Farm
VRP16: Carn Rd (Right)
 Figure VRP16f-R: Scenario 3 (Right): Predicted Possible Future View (Operational, Under Construction, Permitted and Submitted wind farms, and Proposed Slieveglass Extension wind farm)



Photograph VRP17: Baseline photography 150 degrees (for context only)



VRP17 Location Map



ZTV01: Zone of Theoretical Visibility for Slieveglass Extension Turbines 150m Blade Tip Height, showing VRP17 Location

Proposed Slieveglass Extension Wind Turbines Visible at 150m Blade Tip Height

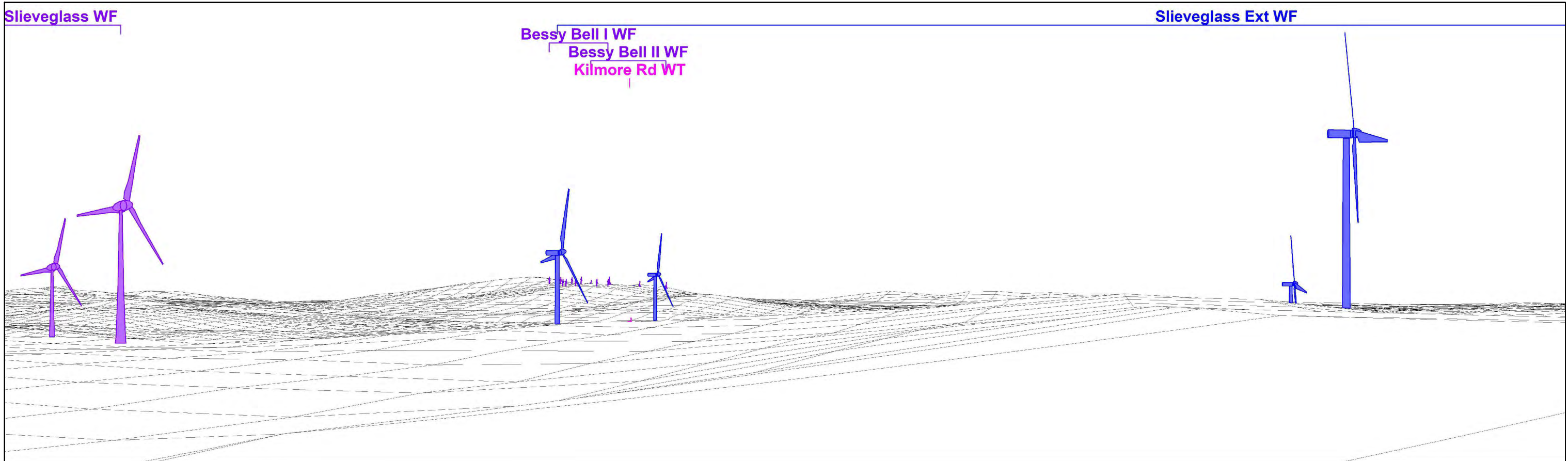
- 1 No. Wind Turbine Visible
- 2 No. Wind Turbines Visible
- 3 No. Wind Turbines Visible
- 4 No. Wind Turbines Visible
- 5 No. Wind Turbines Visible



VRP17 Camera Tripod Location Photography




Photomontage 17f: Scenario 3 (Left): Predicted Possible Future View (Operational, Under Construction, Permitted and Submitted wind farms, and Proposed Slieveglass Extension wind farm)



Wireframe 17f: Scenario 3 (Left): Predicted Possible Future View (Operational, Under Construction, Permitted and Submitted wind farms, and Proposed Slieveglass Extension wind farm)

Canavan Associates Ltd.
 Environmental Consultants, Ecologists, Ornithologists
 Chartered Town Planners and Registered Architects
www.canavanassociates.com info@canavanassociates.com



Viewpoint and image data:
 Direction to centre of view: 109.2°
 Included angle: 130° (65°+65°) (Cylindrical Projection)
 Image Size: 2 No. 400mm x 118mm (9,126 x 2,693 Pixels)
 Principal Distance: 353mm
 Rendered Turbine Wind Direction: 255°

Predicted theoretical visibility of Proposed Slieveglass Extension wind turbine on wireframe:
 Distance to nearest Slieveglass Ext wind turbine: 708m
 Nearest Slieveglass Ext Wind Turbine: T3
 blade tips theoretically visible: 5
 hubs theoretically visible: 5

Proposed Slieveglass Extension Wind Farm:
 Turbine Layout: TL16
 Max Hub height: 91.5m
 Max Rotor Dia: 117m
 Max Tip height: 150m

Wind turbines visible on wireframe:

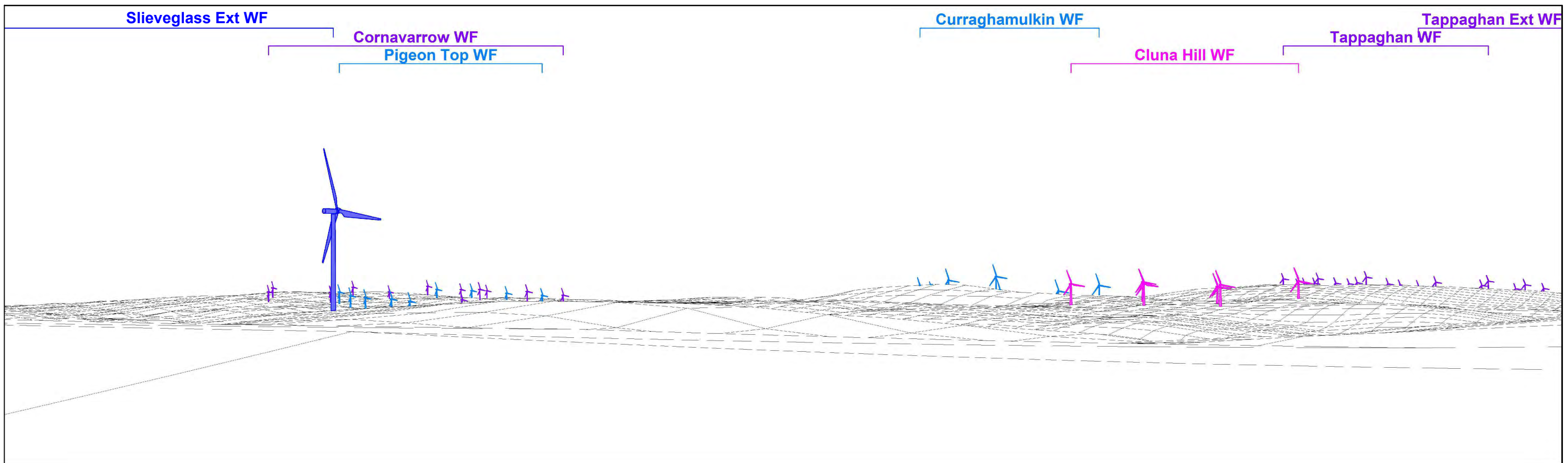
- Proposed Slieveglass Extension Wind Turbines
- Operational Wind Turbines
- Under Construction Wind Turbines (Gronan)
- Permitted Wind Turbines (Exc. Altgolan & Clunahill)
- Submitted Wind Turbines (Inc. Altgolan & Clunahill)

Slieveglass Extension Wind Farm

VRP17: Bolaght Mtn Walking Route, West of Site (Left)
 Figure VRP17f-L: Scenario 3 (Left): Predicted Possible Future View (Operational, Under Construction, Permitted and Submitted wind farms, and Proposed Slieveglass Extension wind farm)




Photomontage 17f: Scenario 3 (Right): Predicted Possible Future View (Operational, Under Construction, Permitted and Submitted wind farms, and Proposed Slieveglass Extension wind farm)



Wireframe 17f: Scenario 3 (Right): Predicted Possible Future View (Operational, Under Construction, Permitted and Submitted wind farms, and Proposed Slieveglass Extension wind farm)

Canavan Associates Ltd.
 Environmental Consultants, Ecologists, Ornithologists
 Chartered Town Planners and Registered Architects
www.canavanassociates.com info@canavanassociates.com



Viewpoint and image data:
 Direction to centre of view: 109.2°
 Included angle: 130° (65°+65°) (Cylindrical Projection)
 Image Size: 2 No. 400mm x 118mm (9,126 x 2,693 Pixels)
 Principal Distance: 353mm
 Rendered Turbine Wind Direction: 255°

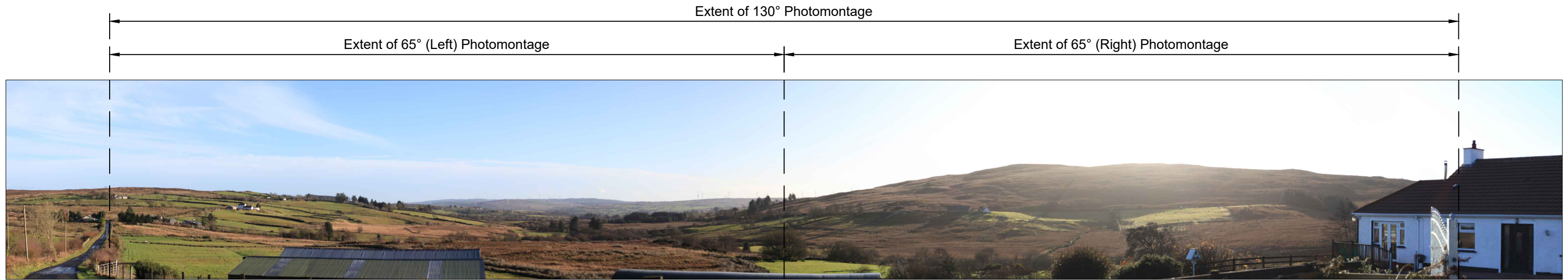
Predicted theoretical visibility of Proposed Slieveglass Extension wind turbine on wireframe:
 Distance to nearest Slieveglass Ext wind turbine: 708m
 Nearest Slieveglass Ext Wind Turbine: T3
 blade tips theoretically visible: 5
 hubs theoretically visible: 5

Proposed Slieveglass Extension Wind Farm:
 Turbine Layout: TL16
 Max Hub height: 91.5m
 Max Rotor Dia: 117m
 Max Tip height: 150m

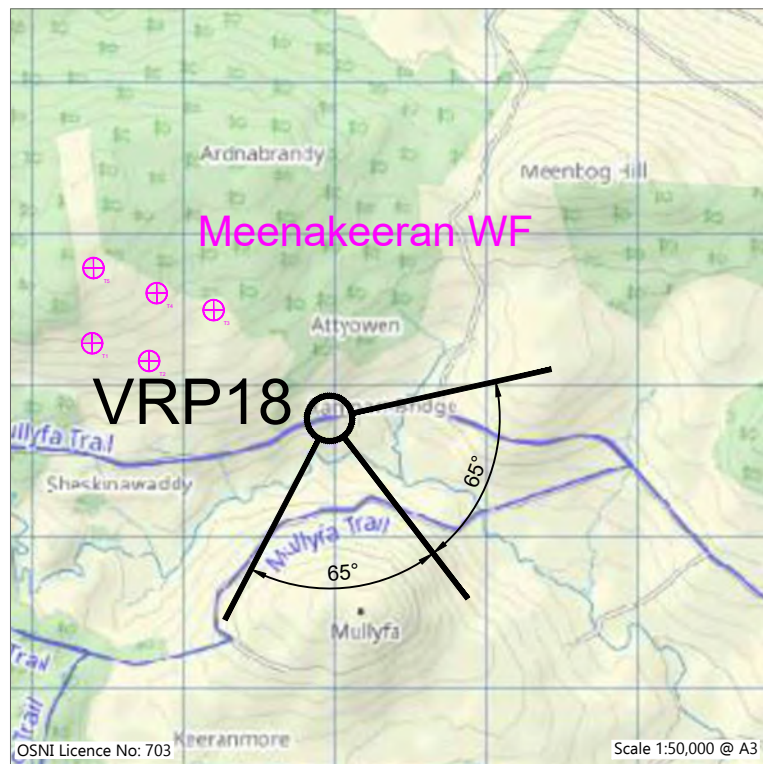
Wind turbines visible on wireframe:

- Proposed Slieveglass Extension Wind Turbines
- Operational Wind Turbines
- Under Construction Wind Turbines (Gronan)
- Permitted Wind Turbines (Exc. Altgolan & Clunahill)
- Submitted Wind Turbines (Inc. Altgolan & Clunahill)

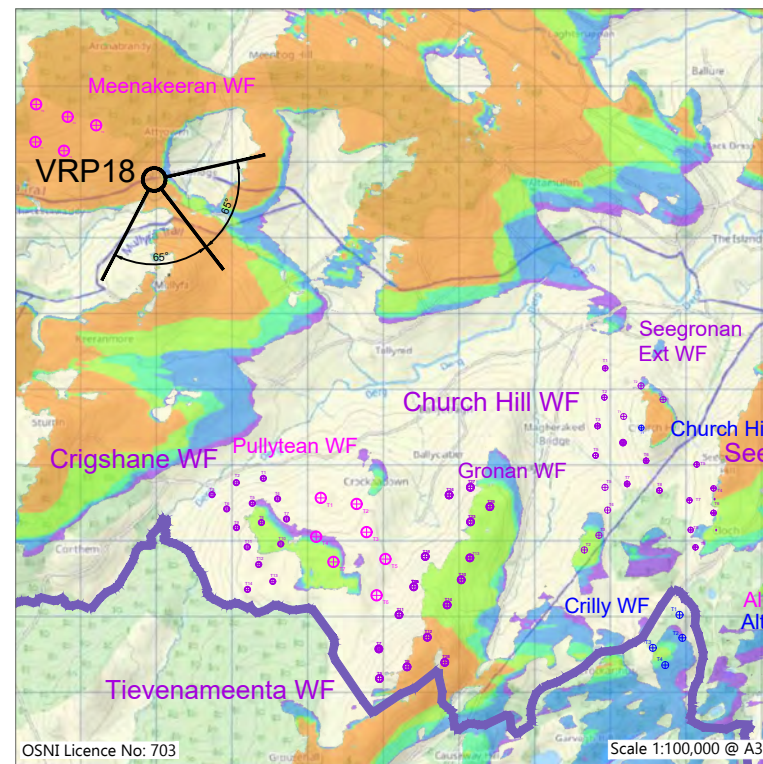
Slieveglass Extension Wind Farm
VRP17: Bolaght Mtn Walking Route, West of Site (Right)
 Figure VRP17f-R: Scenario 3 (Right): Predicted Possible Future View (Operational, Under Construction, Permitted and Submitted wind farms, and Proposed Slieveglass Extension wind farm)



Photograph VRP18: Baseline photography 150 degrees (for context only)



VRP18 Location Map



ZTV01: Zone of Theoretical Visibility for Slieveglass Extension Turbines 150m Blade Tip Height, showing VRP18 Location

Proposed Slieveglass Extension Wind Turbines Visible at 150m Blade Tip Height

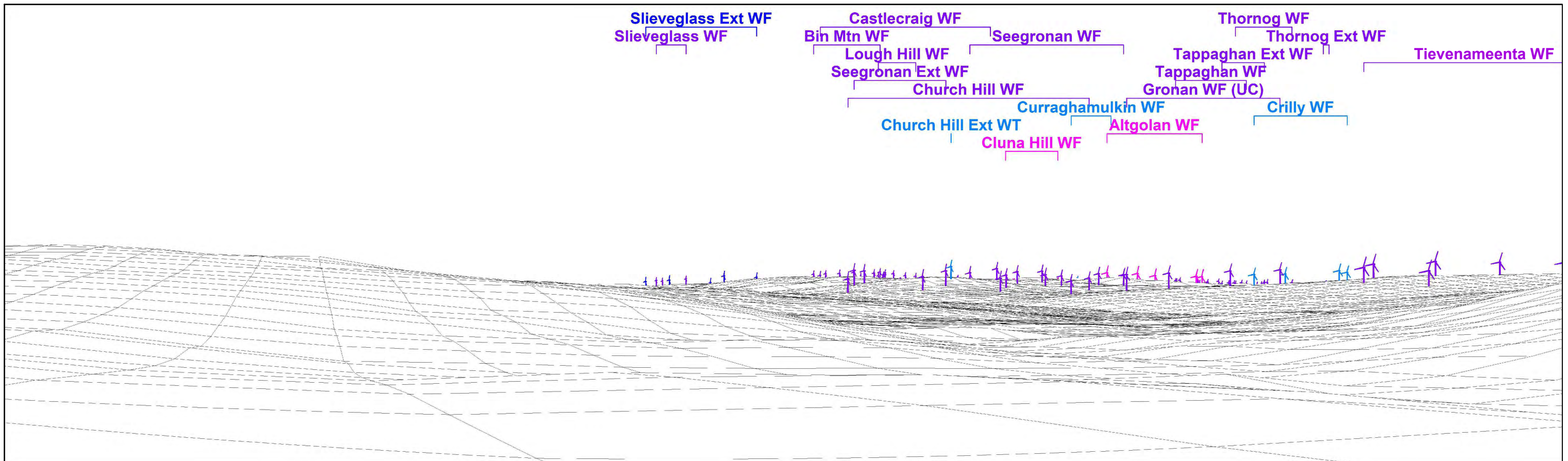
- 1 No. Wind Turbine Visible
- 2 No. Wind Turbines Visible
- 3 No. Wind Turbines Visible
- 4 No. Wind Turbines Visible
- 5 No. Wind Turbines Visible




VRP18 Camera Tripod Location Photography

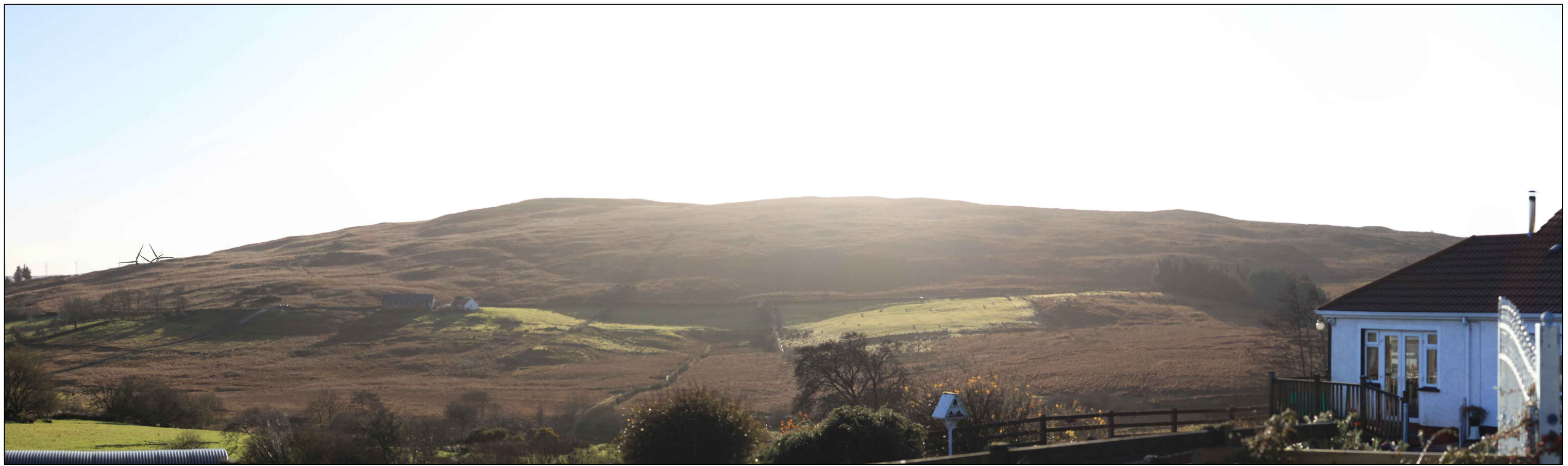


Photomontage 18f: Scenario 3 (Left): Predicted Possible Future View (Operational, Under Construction, Permitted and Submitted wind farms, and Proposed Slieveglass Extension wind farm)

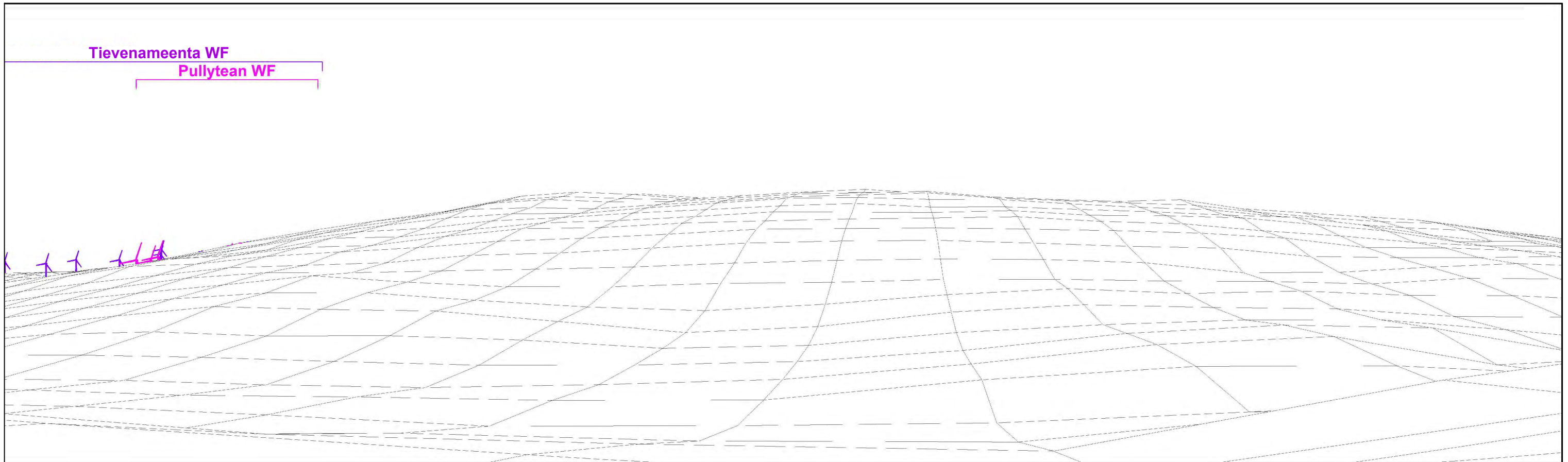


Wireframe 18f: Scenario 3 (Left): Predicted Possible Future View (Operational, Under Construction, Permitted and Submitted wind farms, and Proposed Slieveglass Extension wind farm)


<p>Canavan Associates Ltd. Environmental Consultants, Ecologists, Ornithologists Chartered Town Planners and Registered Architects www.canavanassociates.com info@canavanassociates.com</p> 	<p>Viewpoint and image data: Direction to centre of view: 142.5° Included angle: 130° (65°+65°) (Cylindrical Projection) Image Size: 2 No. 400mm x 118mm (9,126 x 2,693 Pixels) Principal Distance: 353mm Rendered Turbine Wind Direction: 230°</p>	<p>Predicted theoretical visibility of Proposed Slieveglass Extension wind turbine on wireframe: Distance to nearest Slieveglass Ext wind turbine: 16,693m Nearest Slieveglass Ext Wind Turbine: T3 blade tips theoretically visible: 5 hubs theoretically visible: 5</p>	<p>Proposed Slieveglass Extension Wind Farm: Turbine Layout: TL16 Max Hub height: 91.5m Max Rotor Dia: 117m Max Tip height: 150m</p>	<p>Wind turbines visible on wireframe:</p> <ul style="list-style-type: none"> ■ Proposed Slieveglass Extension Wind Turbines ■ Operational Wind Turbines ■ Under Construction Wind Turbines (Gronan) ■ Permitted Wind Turbines (Exc. Altgolan & Clunahill) ■ Submitted Wind Turbines (Inc. Altgolan & Clunahill) 	<p>Slieveglass Extension Wind Farm</p> <p>VRP18: Tullycar Road (Left) Figure VRP18f-L: Scenario 3 (Left): Predicted Possible Future View (Operational, Under Construction, Permitted and Submitted wind farms, and Proposed Slieveglass Extension wind farm)</p>
--	--	--	---	--	--

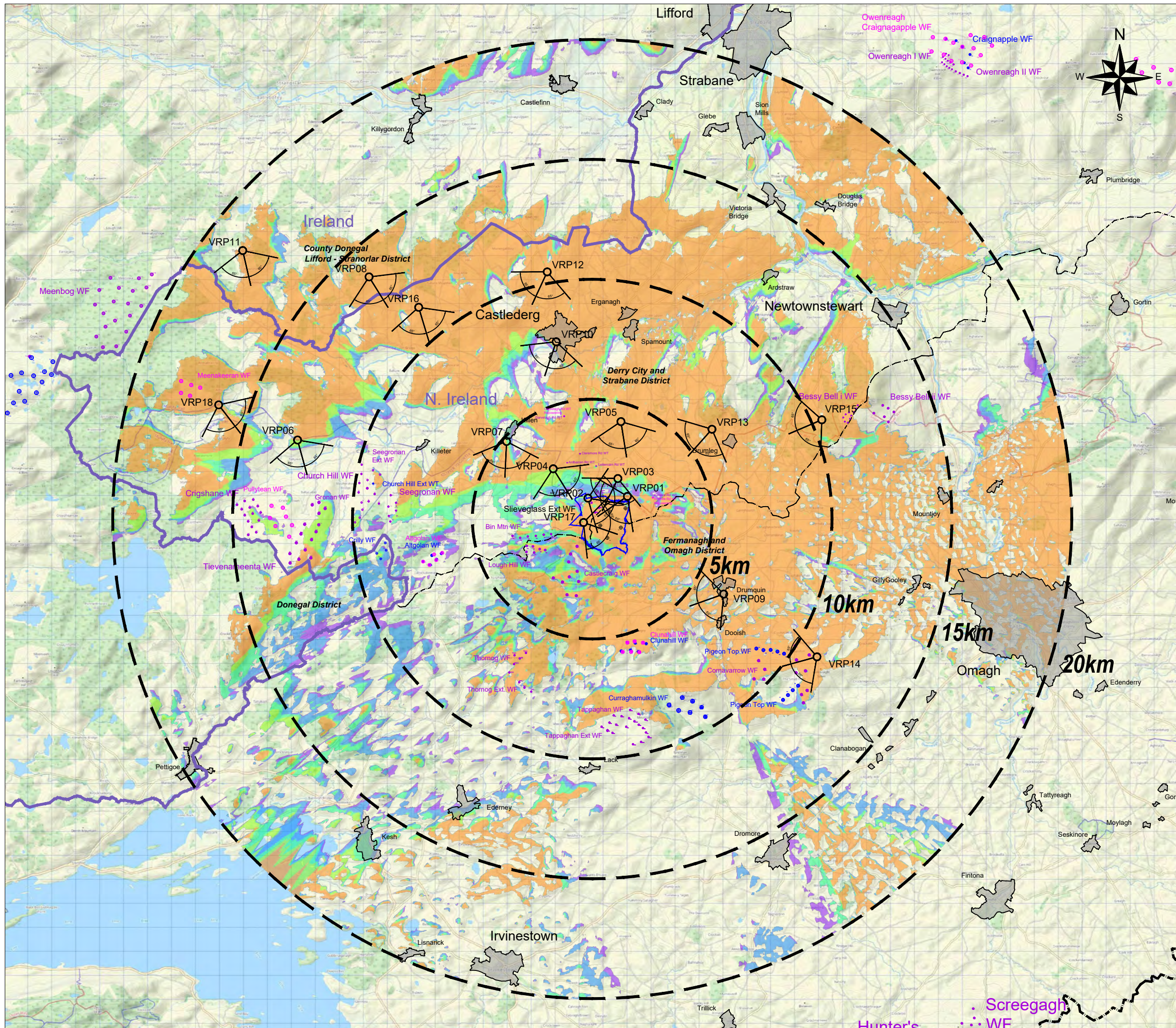


Photomontage 18f: Scenario 3 (Right): Predicted Possible Future View (Operational, Under Construction, Permitted and Submitted wind farms, and Proposed Slieveglass Extension wind farm)



Wireframe 18f: Scenario 3 (Right): Predicted Possible Future View (Operational, Under Construction, Permitted and Submitted wind farms, and Proposed Slieveglass Extension wind farm)

<p>Canavan Associates Ltd. Environmental Consultants, Ecologists, Ornithologists Chartered Town Planners and Registered Architects www.canavanassociates.com info@canavanassociates.com</p> 	<p>Viewpoint and image data: Direction to centre of view: 142.5° Included angle: 130° (65°+65°) (Cylindrical Projection) Image Size: 2 No. 400mm x 118mm (9,126 x 2,693 Pixels) Principal Distance: 353mm Rendered Turbine Wind Direction: 230°</p>	<p>Predicted theoretical visibility of Proposed Slieveglass Extension wind turbine on wireframe: Distance to nearest Slieveglass Ext wind turbine: 16,693m Nearest Slieveglass Ext Wind Turbine: T3 blade tips theoretically visible: 5 hubs theoretically visible: 5</p>	<p>Proposed Slieveglass Extension Wind Farm: Turbine Layout: TL16 Max Hub height: 91.5m Max Rotor Dia: 117m Max Tip height: 150m</p>	<p>Wind turbines visible on wireframe:</p> <ul style="list-style-type: none"> ■ Proposed Slieveglass Extension Wind Turbines ■ Operational Wind Turbines ■ Under Construction Wind Turbines (Gronan) ■ Permitted Wind Turbines (Exc. Altgolan & Clunahill) ■ Submitted Wind Turbines (Inc. Altgolan & Clunahill) 	<p>Slieveglass Extension Wind Farm</p> <p>VRP18: Tullycar Road (Right) Figure VRP18f-R: Scenario 3 (Right): Predicted Possible Future View (Operational, Under Construction, Permitted and Submitted wind farms, and Proposed Slieveglass Extension wind farm)</p>
--	--	--	---	---	--



Slieveglass Extension Wind Farm

Legend

- Landholding Boundary
- NI / IRL Border
- District Boundary
- Operational Wind Farms
- Permitted Wind Farms
- Proposed Wind Farms
- Viewpoint Locations

Proposed Slieveglass Extension Wind Turbines Visible at 150m Blade Tip Height

- 1 No. Wind Turbine Visible
- 2 No. Wind Turbines Visible
- 3 No. Wind Turbines Visible
- 4 No. Wind Turbines Visible
- 5 No. Wind Turbines Visible

No. of Wind Turbines Visible	Percentage	Area (sq km)
1	2.92%	36.77
2	4.87%	61.27
3	3.23%	40.62
4	3.01%	37.83
5	30.80%	387.24
None	55.16%	693.54
Total	100.00%	1257.27

Zone of Theoretical Visibility Showing No. of Wind Turbines Visible at Blade Tip Height of 150m

Figure ZTV01

Scale: 1:150,000 Date: Mar 2026

Drawing Ref: 2309 fig V1 TL16 (V117 150BTH).dwg

OSI License No.: AR 0017426

OSNI License No.: 703

Canavan Associates Ltd.

Environmental Consultants, Ecologists, Ornithologists
Chartered Town Planners and Registered Architects







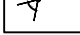
www.canavanassociates.com info@canavanassociates.com

+44 (0) 28 71371700 / +353 (0) 86 8519793
23 Prince's Street, Derry/Londonderry, N. Ireland, BT48 7EY
Gulladuff House, Moville, Co. Donegal, Ireland, F93 KHW8








Slieveglass Extension Wind Farm

Legend

-  Landholding Boundary
-  NI / IRL Border
-  District Boundary
-  Operational Wind Farms
-  Permitted Wind Farms
-  Proposed Wind Farms
-  Viewpoint Locations

Proposed Slieveglass Extension Wind Turbines Visible at 150m Blade Tip Height

-  1 No. Wind Turbine Visible
-  2 No. Wind Turbines Visible
-  3 No. Wind Turbines Visible
-  4 No. Wind Turbines Visible
-  5 No. Wind Turbines Visible

No. of Wind Turbines Visible	Percentage	Area (sq km)
1	2.34%	29.47
2	3.31%	41.56
3	2.26%	28.40
4	2.42%	30.39
5	21.25%	267.18
None	68.42%	860.27
Total	100.00%	1257.27

Note: 20m Height Forestry Exclusion Zones Based on:

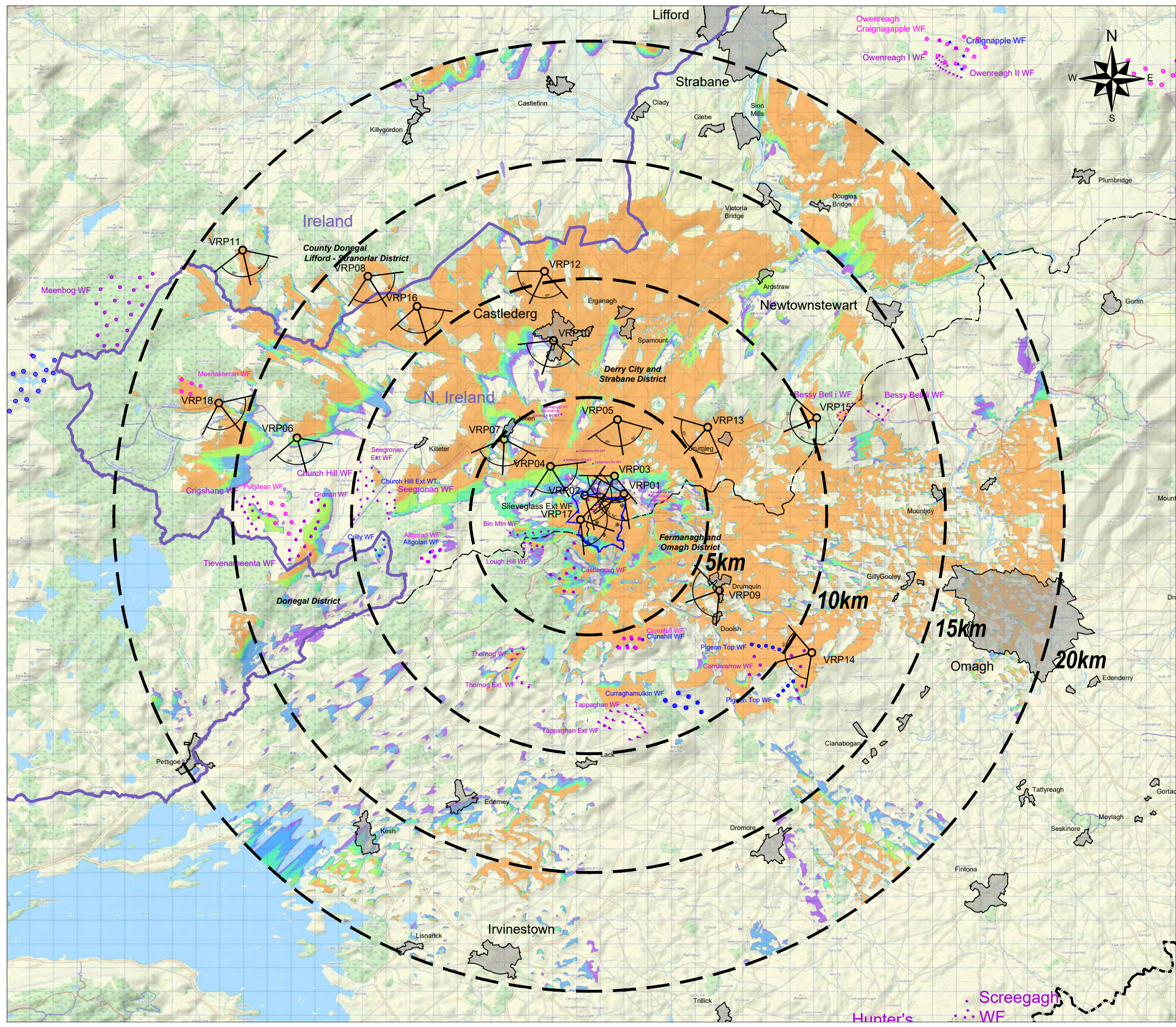
- NI Woodland Basemap V1.1
- Coillte Forestry Inventory
- Dept. of Agriculture, Foods and the Marine (DAFM) Ireland Private Forest Estate 2021

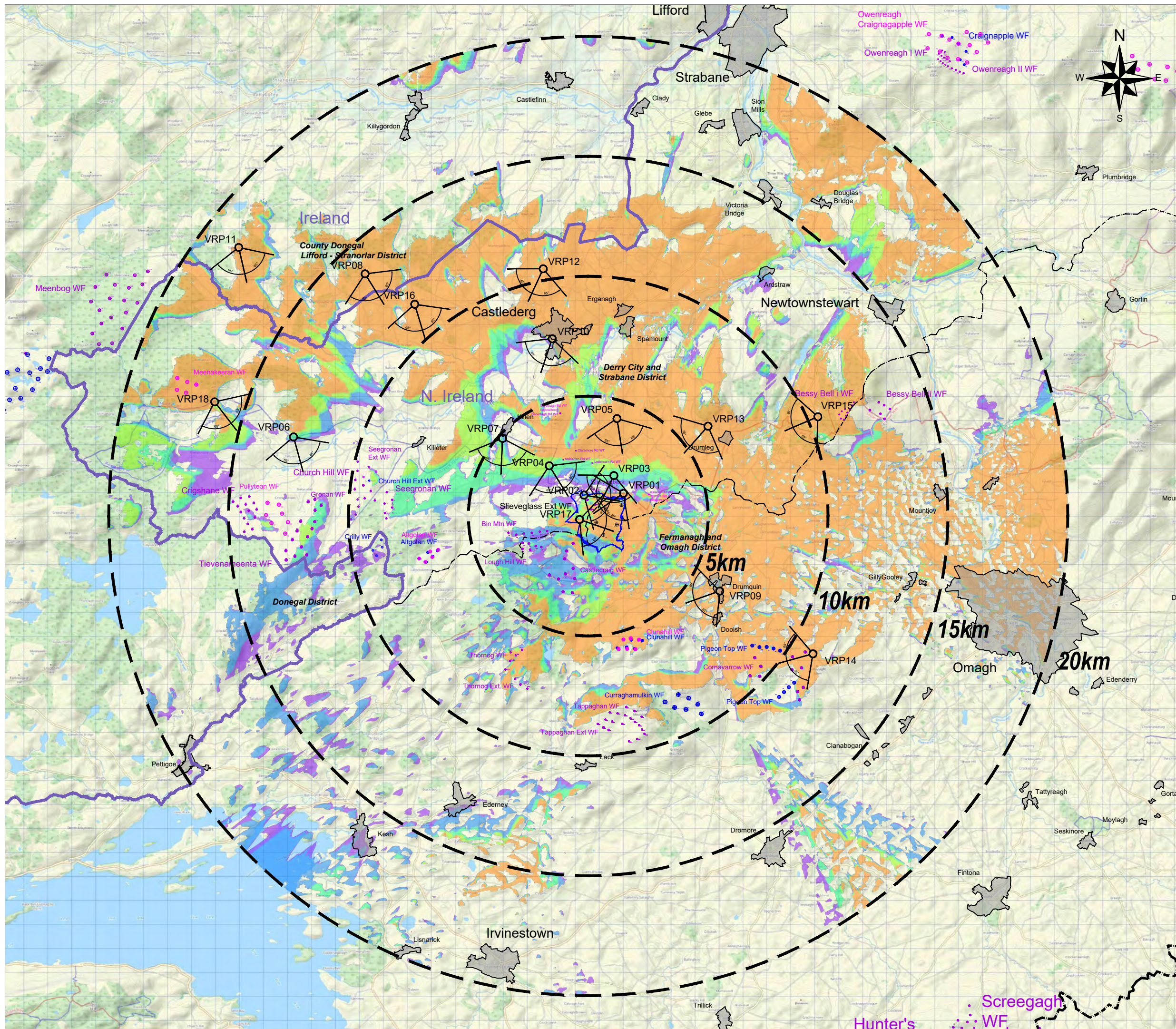
Zone of Theoretical Visibility with Forestry Exclusions Showing No. of Wind Turbines Visible at Blade Tip Height of 150m

Figure ZTV01-1

Scale: 1:150,000	Date: Mar 2026
Drawing Ref: 2309 fig V1 TL16 (V117 150BTH).dwg	
OSI License No.: AR 0017426	OSNI License No.: 703

Canavan Associates Ltd.
 Environmental Consultants, Ecologists, Ornithologists
 Chartered Town Planners and Registered Architects
www.canavanassociates.com info@canavanassociates.com
 +44 (0) 28 71371700 / +353 (0) 86 8519793
 23 Prince's Street, Derry/Londonderry, N. Ireland, BT48 7EY
 Gulladuff House, Moville, Co. Donegal, Ireland, F93 KHW8



Slieveglass Extension Wind Farm

Legend

- Landholding Boundary
- NI / IRL Border
- District Boundary
- Operational Wind Farms
- Permitted Wind Farms
- Proposed Wind Farms
- Viewpoint Locations

Proposed Slieveglass Extension Wind Turbines Visible at 91.5m Hub Height

- 1 No. Wind Turbine Visible
- 2 No. Wind Turbines Visible
- 3 No. Wind Turbines Visible
- 4 No. Wind Turbines Visible
- 5 No. Wind Turbines Visible

No. of Wind Turbines Visible	Percentage	Area (sq km)
1	3.56%	44.80
2	4.93%	61.97
3	2.90%	36.51
4	3.11%	39.07
5	23.09%	290.32
None	62.41%	784.62
Total	100.00%	1257.27

Zone of Theoretical Visibility Showing No. of Wind Turbine Visible at Hub Height of 91.5m

Figure ZTV02

Scale: 1:150,000 Date: Mar 2026

Drawing Ref: 2309 fig V1 TL16 (V117 150BTH).dwg

OSI License No.: AR 0017426

OSNI License No.: 703






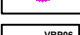

Canavan Associates Ltd.

Environmental Consultants, Ecologists, Ornithologists
Chartered Town Planners and Registered Architects
www.canavanassociates.com info@canavanassociates.com
+44 (0) 28 71371700 / +353 (0) 86 8519793
23 Prince's Street, Derry/Londonderry, N. Ireland, BT48 7EY
Gulladuff House, Moville, Co. Donegal, Ireland, F93 KHW8








Slieveglass Extension Wind Farm

Legend

-  Landholding Boundary
-  NI / IRL Border
-  District Boundary
-  Operational Wind Farms
-  Permitted Wind Farms
-  Proposed Wind Farms
-  Viewpoint Locations

Proposed Slieveglass Extension Wind Turbines Visible at 91.5m Hub Height

-  1 No. Wind Turbine Visible
-  2 No. Wind Turbines Visible
-  3 No. Wind Turbines Visible
-  4 No. Wind Turbines Visible
-  5 No. Wind Turbines Visible

No. of Wind Turbines Visible	Percentage	Area (sq km)
1	2.61%	32.87
2	3.00%	37.67
3	2.40%	30.16
4	2.68%	33.74
5	15.54%	195.42
None	73.76%	927.41
Total	100.00%	1257.27

Note: 20m Height Forestry Exclusion Zones Based on:

- NI Woodland Basemap V1.1
- Coillte Forestry Inventory
- Dept. of Agriculture, Foods and the Marine (DAFM) Ireland Private Forest Estate 2021

Zone of Theoretical Visibility with Forestry Exclusions Showing No. of Wind Turbines Visible at Hub Height of 91.5m

Figure ZTV02-1

Scale: 1:150,000 Date: Mar 2026

Drawing Ref: 2309 fig V1 TL16 (V117 150BTH).dwg

OSI License No.: AR 0017426 OSNI License No.: 703

Canavan Associates Ltd.
 Environmental Consultants, Ecologists, Ornithologists
 Chartered Town Planners and Registered Architects
www.canavanassociates.com info@canavanassociates.com
 +44 (0) 28 71371700 / +353 (0) 86 8519793
 23 Prince's Street, Derry/Londonderry, N. Ireland, BT48 7EY
 Gulladuff House, Moville, Co. Donegal, Ireland, F93 KHW8

