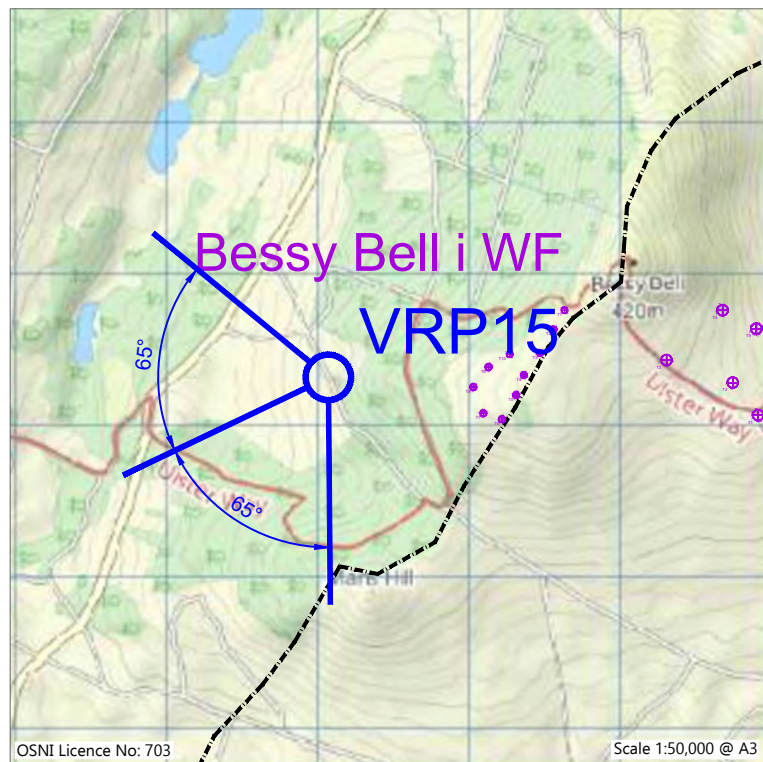
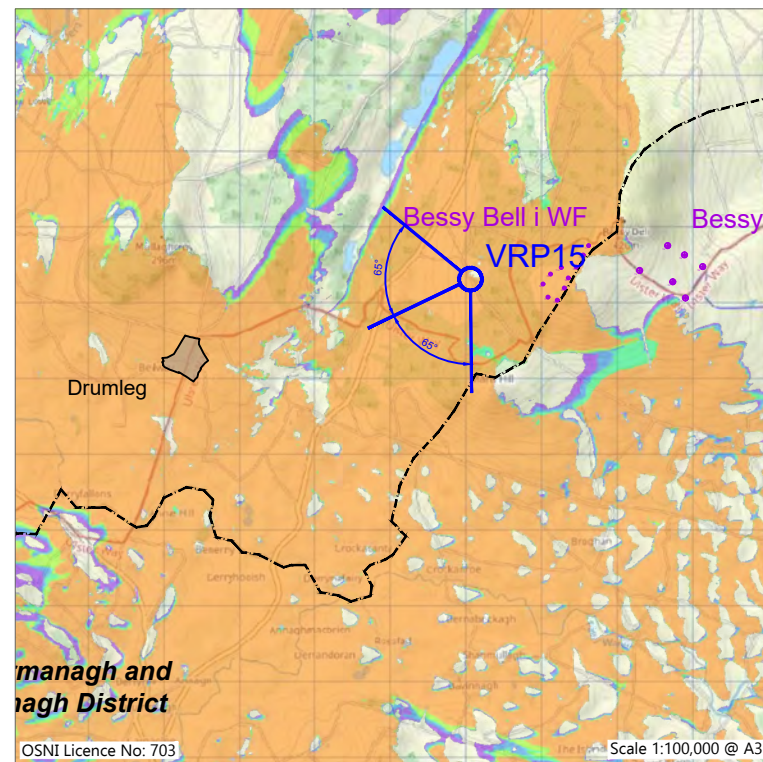


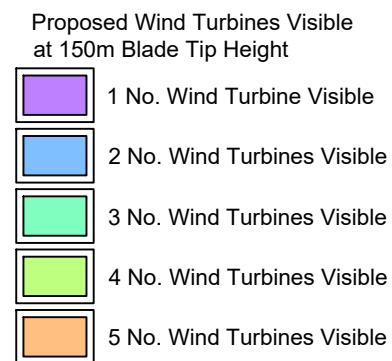
Photograph VRP15: Baseline photography 150 degrees (for context only)



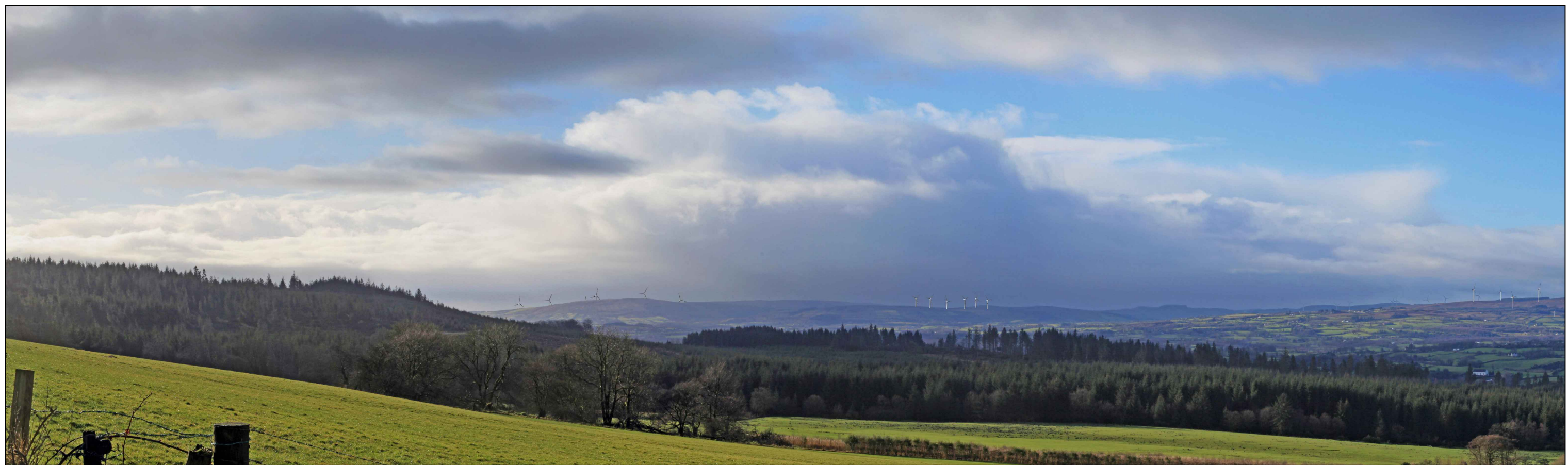
VRP15 Location Map



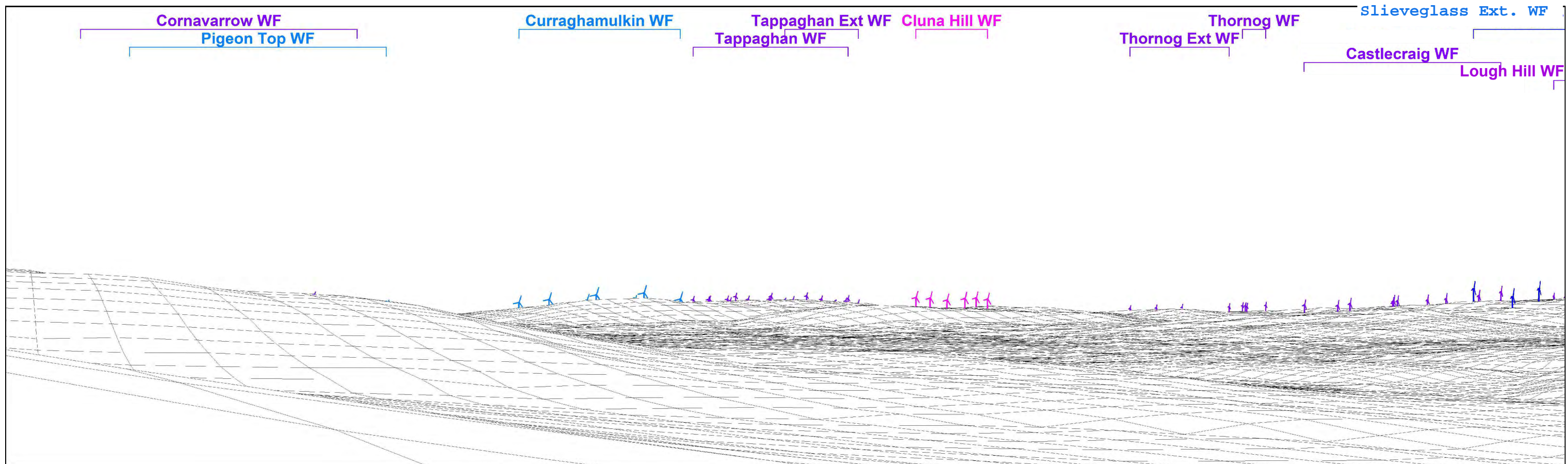
ZTV01: Zone of Theoretical Visibility for Proposed Turbines
150m Blade Tip Height, showing VRP15 Location




VRP15 Camera Tripod Location Photography

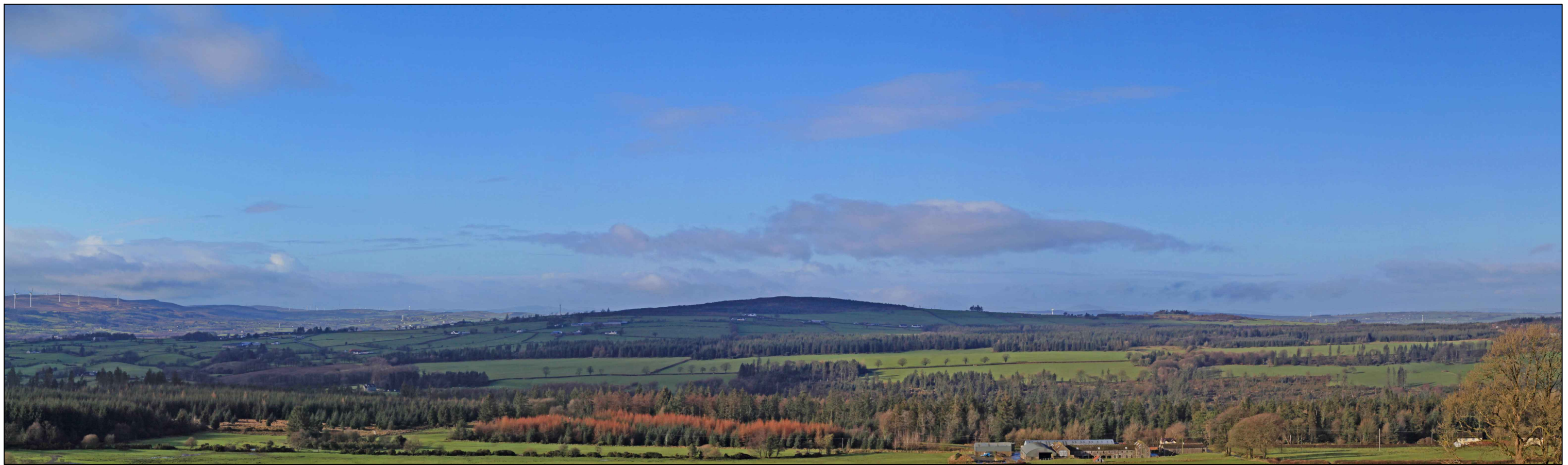


Photomontage 15f: Scenario 3 (Left): Predicted Possible Future View (Operational, Under Construction, Permitted and Submitted wind farms, and Proposed wind farm)

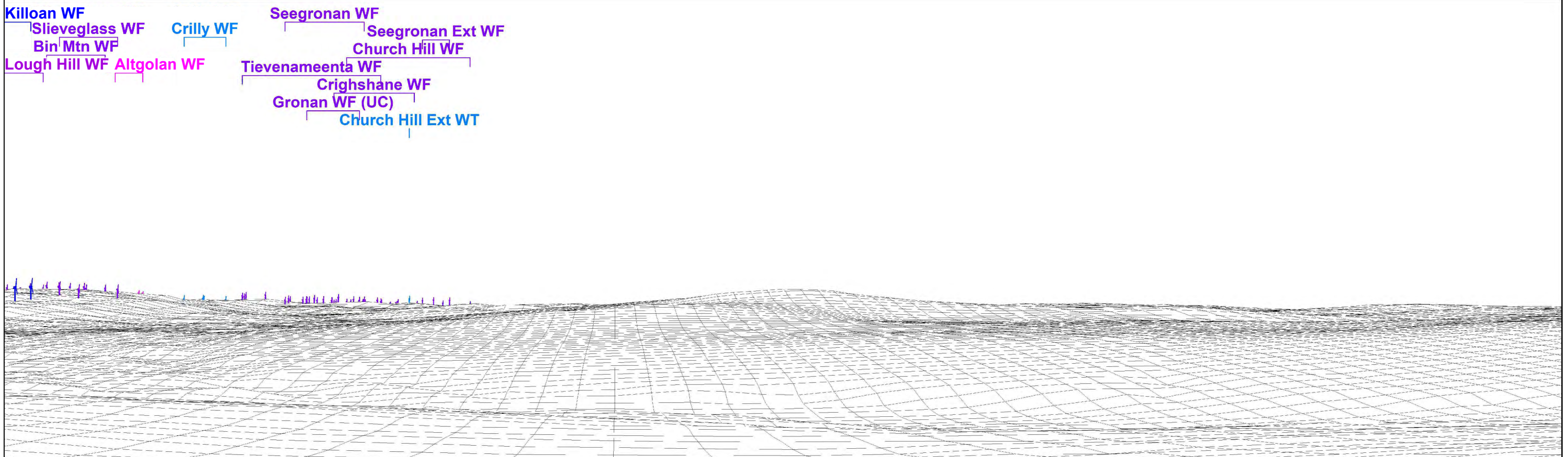


Wireframe 15f: Scenario 3 (Left): Predicted Possible Future View (Operational, Under Construction, Permitted and Submitted wind farms, and Proposed wind farm)

<p>Canavan Associates Ltd. Environmental Consultants, Ecologists, Ornithologists Chartered Town Planners and Registered Architects www.canavanassociates.com info@canavanassociates.com</p> 	<p>Viewpoint and image data: Direction to centre of view: 244.5° Included angle: 130° (65°+65°) (Cylindrical Projection) Image Size: 2 No. 400mm x 118mm (9,126 x 2,693 Pixels) Principal Distance: 353mm Rendered Turbine Wind Direction: 255°</p>	<p>Predicted theoretical visibility of Proposed wind turbine on wireframe: Distance to nearest wind turbine: 9,000m Nearest Wind Turbine: T2 blade tips theoretically visible: 5 hubs theoretically visible: 5</p>	<p>Proposed Wind Farm: Turbine Layout: TL12 Max Hub height: 91.5m Max Rotor Dia: 117m Max Tip height: 150m</p>	<p>Wind turbines visible on wireframe:</p> <ul style="list-style-type: none"> ■ Proposed Wind Turbines ■ Operational Wind Turbines ■ Under Construction Wind Turbines (Gronan) ■ Permitted Wind Turbines (Exc. Altgolan & Clunahill) ■ Submitted Wind Turbines (Inc. Altgolan & Clunahill) 	<p>Slieveglass Extension Wind Farm</p> <p>VRP15: Cashty Road at entrance to quarry (Left) Figure VRP15f-L: Scenario 3 (Left): Predicted Possible Future View (Operational, Under Construction, Permitted and Submitted wind farms, and Proposed wind farm)</p>
--	--	---	---	--	--




Photomontage 15f: Scenario 3 (Right): Predicted Possible Future View (Operational, Under Construction, Permitted and Submitted wind farms, and Proposed wind farm)



Wireframe 15f: Scenario 3 (Right): Predicted Possible Future View (Operational, Under Construction, Permitted and Submitted wind farms, and Proposed wind farm)

Canavan Associates Ltd.
 Environmental Consultants, Ecologists, Ornithologists
 Chartered Town Planners and Registered Architects
www.canavanassociates.com info@canavanassociates.com



Viewpoint and image data:
 Direction to centre of view: 244.5°
 Included angle: 130° (65°+65°) (Cylindrical Projection)
 Image Size: 2 No. 400mm x 118mm (9,126 x 2,693 Pixels)
 Principal Distance: 353mm
 Rendered Turbine Wind Direction: 255°

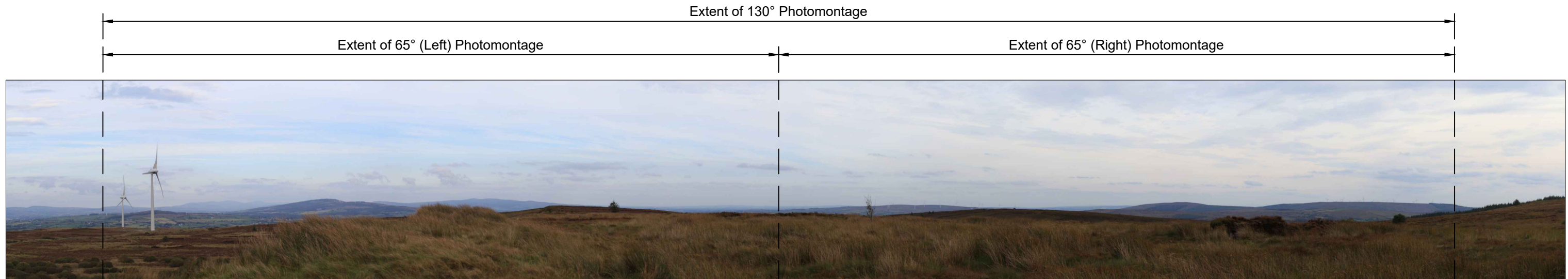
Predicted theoretical visibility of Proposed wind turbine on wireframe:
 Distance to nearest proposed wind turbine: 9,000m
 Nearest Wind Turbine: T2
 blade tips theoretically visible: 5
 hubs theoretically visible: 5

Proposed Wind Farm:
 Turbine Layout: TL12
 Max Hub height: 91.5m
 Max Rotor Dia: 117m
 Max Tip height: 150m

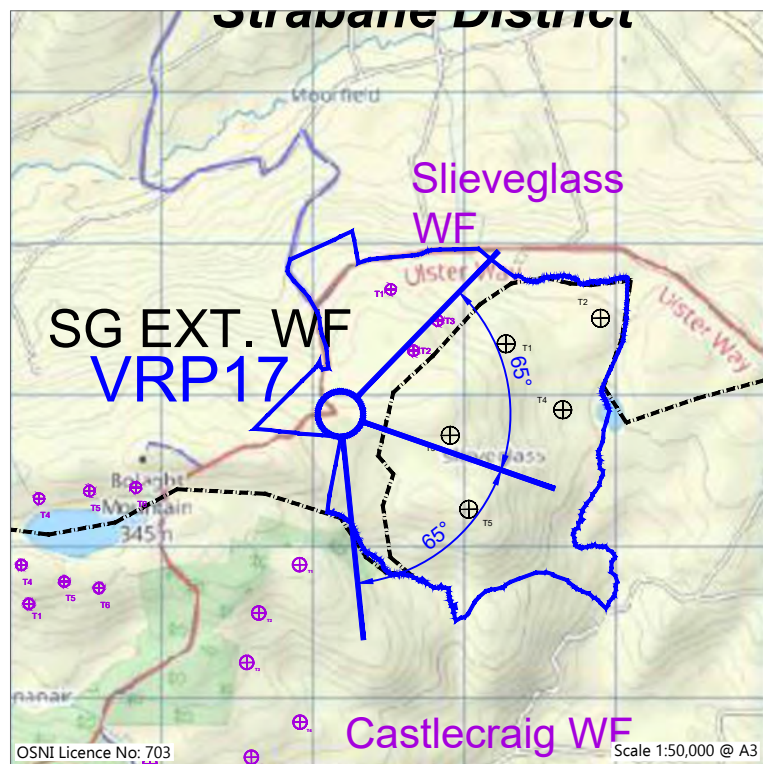
Wind turbines visible on wireframe:

- Proposed Wind Turbines
- Operational Wind Turbines
- Under Construction Wind Turbines (Gronan)
- Permitted Wind Turbines (Exc. Altgolan & Clunahill)
- Submitted Wind Turbines (Inc. Altgolan & Clunahill)

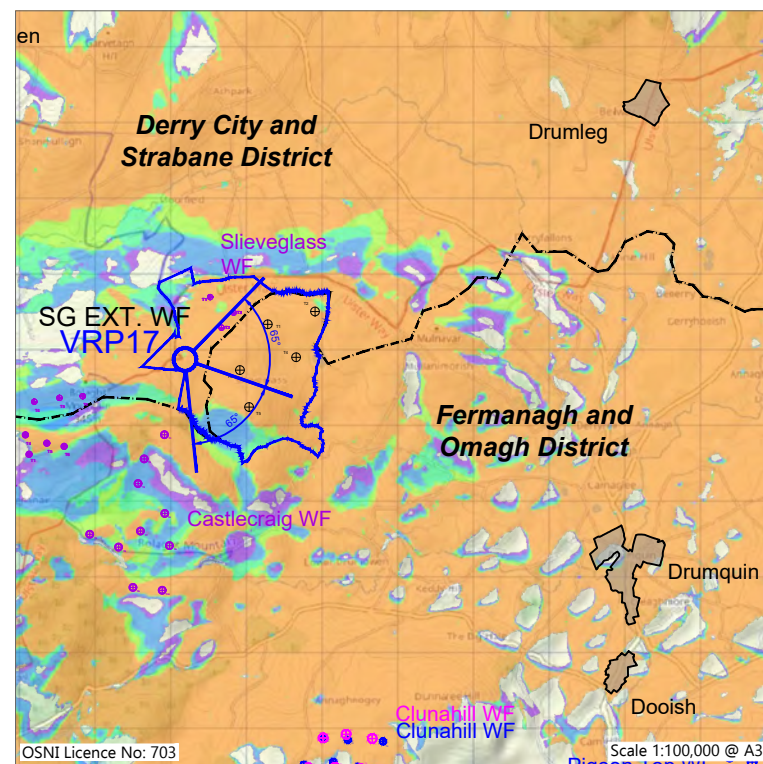
Slieveglass Extension Wind Farm
VRP15: Cashty Road at entrance to quarry (Right)
 Figure VRP15f-R: Scenario 3 (Right): Predicted Possible Future View (Operational, Under Construction, Permitted and Submitted wind farms, and Proposed wind farm)



Photograph VRP17: Baseline photography 150 degrees (for context only)



VRP17 Location Map




ZTV01: Zone of Theoretical Visibility for proposed Turbines 150m Blade Tip Height, showing VRP17 Location

- Proposed Wind Turbines Visible at 150m Blade Tip Height
- 1 No. Wind Turbine Visible
 - 2 No. Wind Turbines Visible
 - 3 No. Wind Turbines Visible
 - 4 No. Wind Turbines Visible
 - 5 No. Wind Turbines Visible



VRP17 Camera Tripod Location Photography

Canavan Associates Ltd.
Environmental Consultants, Ecologists, Ornithologists
Chartered Town Planners and Registered Architects
www.canavanassociates.com info@canavanassociates.com



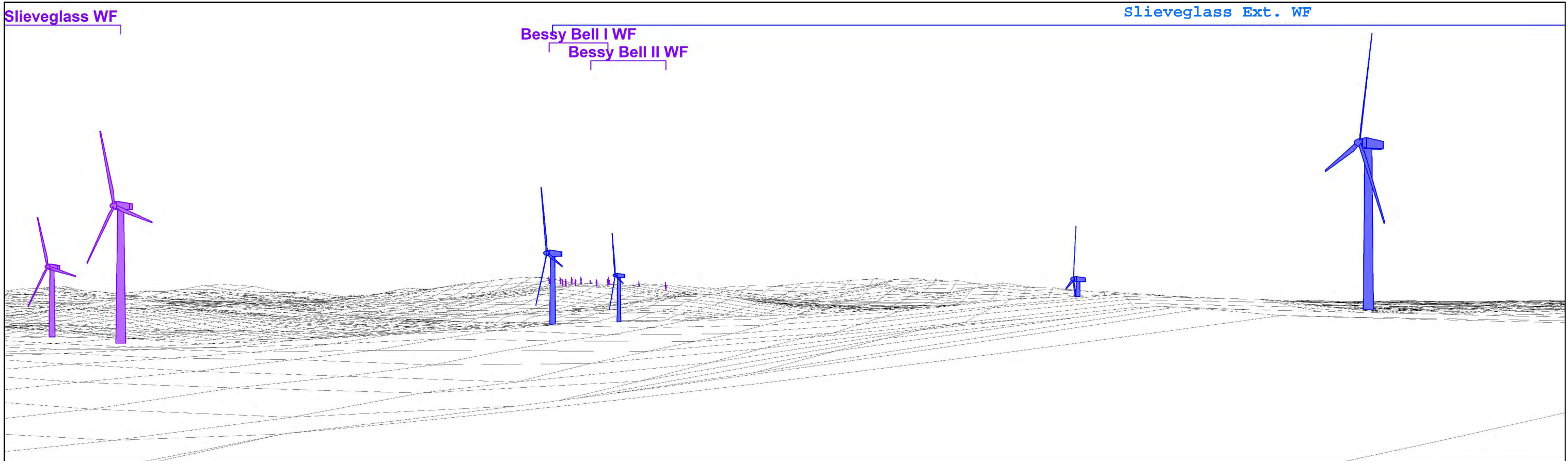
Viewpoint and image data:
Location: 227180,376867 (OSNI IGR TM75 EPSG:29903)
Elevation: 291m AOD
Direction to centre of view: 109.2°
Included angle: 130° (65°+65°) (Cylindrical Projection)

Camera and Photo data:
Camera: Canon EOS 5D MkII
Lens: Canon EF 50mm 1:1.4
Camera Height: 1.5 AGL
Date & Time: 29/09/2025 @ 16.19
Lighting: Weak Sunlight

Slieveglass Extension Wind Farm
VRP17: Bolaght Mtn Walking Route, West of Site
Figure VRP17: Viewpoint Information Overview




Photomontage 17f: Scenario 3 (Left): Predicted Possible Future View (Operational, Under Construction, Permitted and Submitted wind farms, and Proposed wind farm)



Wireframe 17f: Scenario 3 (Left): Predicted Possible Future View (Operational, Under Construction, Permitted and Submitted wind farms, and Proposed wind farm)

Canavan Associates Ltd.
 Environmental Consultants, Ecologists, Ornithologists
 Chartered Town Planners and Registered Architects
www.canavanassociates.com info@canavanassociates.com



Viewpoint and image data:
 Direction to centre of view: 109.2°
 Included angle: 130° (65°+65°) (Cylindrical Projection)
 Image Size: 2 No. 400mm x 118mm (9,126 x 2,693 Pixels)
 Principal Distance: 353mm
 Rendered Turbine Wind Direction: 255°

Predicted theoretical visibility of Proposed wind turbine on wireframe:
 Distance to nearest wind turbine: 739m
 Nearest Wind Turbine: T3
 blade tips theoretically visible: 5
 hubs theoretically visible: 5

Proposed Wind Farm:
 Turbine Layout: TL12
 Max Hub height: 91.5m
 Max Rotor Dia: 117m
 Max Tip height: 150m

Wind turbines visible on wireframe:

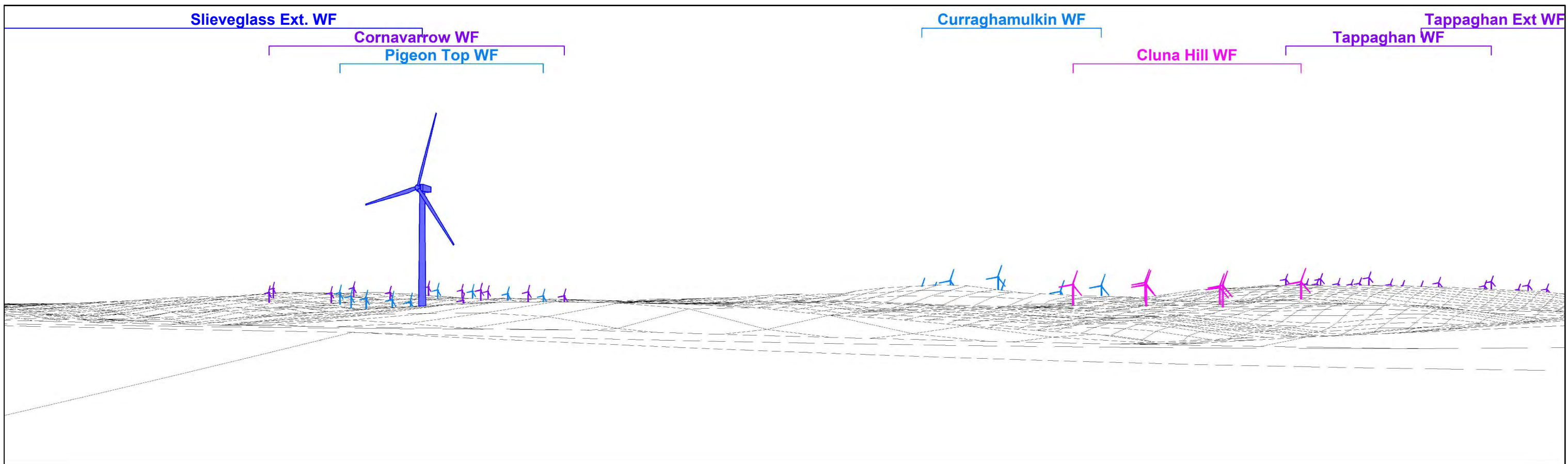
- Proposed Wind Turbines
- Operational Wind Turbines
- Under Construction Wind Turbines (Gronan)
- Permitted Wind Turbines (Exc. Altgolan & Clunahill)
- Submitted Wind Turbines (Inc. Altgolan & Clunahill)

Slieveglass Extension Wind Farm

VRP17: Bolaght Mtn Walking Route, West of Site (Left)
 Figure VRP17f-L: Scenario 3 (Left): Predicted Possible Future View (Operational, Under Construction, Permitted and Submitted wind farms, and Proposed Killoan wind farm)



Photomontage 17f: Scenario 3 (Right): Predicted Possible Future View (Operational, Under Construction, Permitted and Submitted wind farms, and Proposed wind farm)



Wireframe 17f: Scenario 3 (Right): Predicted Possible Future View (Operational, Under Construction, Permitted and Submitted wind farms, and Proposed wind farm)

Canavan Associates Ltd.
 Environmental Consultants, Ecologists, Ornithologists
 Chartered Town Planners and Registered Architects
www.canavanassociates.com info@canavanassociates.com

Viewpoint and image data:
 Direction to centre of view: 109.2°
 Included angle: 130° (65°+65°) (Cylindrical Projection)
 Image Size: 2 No. 400mm x 118mm (9,126 x 2,693 Pixels)
 Principal Distance: 353mm
 Rendered Turbine Wind Direction: 255°

Predicted theoretical visibility of Proposed wind turbine on wireframe:
 Distance to nearest wind turbine: 739m
 Nearest Wind Turbine: T3
 blade tips theoretically visible: 5
 hubs theoretically visible: 5

Proposed Wind Farm: Turbine
 Layout: TL12
 Max Hub height: 91.5m
 Max Rotor Dia: 117m
 Max Tip height: 150m

Wind turbines visible on wireframe:

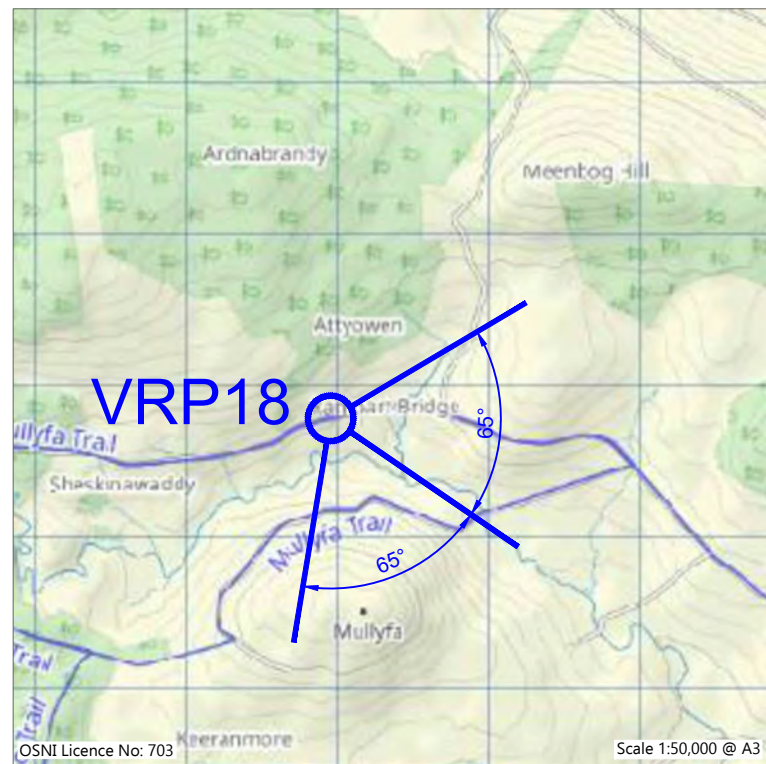
- Proposed Wind Turbines
- Operational Wind Turbines
- Under Construction Wind Turbines (Gronan)
- Permitted Wind Turbines (Exc. Altgolan & Clunahill)
- Submitted Wind Turbines (Inc. Altgolan & Clunahill)

Slieveglass Extension Wind Farm
VRP17: Bolaght Mtn Walking Route, West of Site (Right)
 Figure VRP17f-R: Scenario 3 (Right): Predicted Possible Future View (Operational, Under Construction, Permitted and Submitted wind farms, and Proposed wind farm)

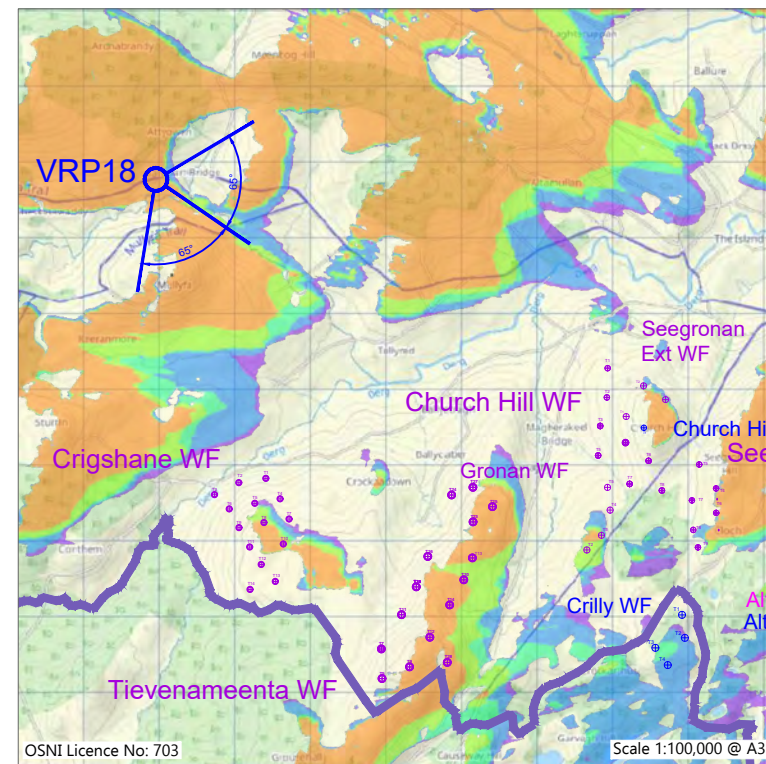
Extent of 65° Photomontage



Photograph VRP18: Baseline photography 90 degrees (for context only)



VRP18 Location Map



ZTV01: Zone of Theoretical Visibility for proposed Turbines 150m Blade Tip Height, showing VRP18 Location

Proposed Wind Turbines Visible at 150m Blade Tip Height

- 1 No. Wind Turbine Visible
- 2 No. Wind Turbines Visible
- 3 No. Wind Turbines Visible
- 4 No. Wind Turbines Visible
- 5 No. Wind Turbines Visible



VRP18 Camera Tripod Location Photography

Canavan Associates Ltd.
Environmental Consultants, Ecologists, Ornithologists
Chartered Town Planners and Registered Architects
www.canavanassociates.com info@canavanassociates.com



Viewpoint and image data:
Location: 211950,381773 (OSNI IGR TM75 EPSG:29903)
Elevation: 154mAOD
Direction to centre of view: 124.4°
Included angle: 65° (Cylindrical Projection)

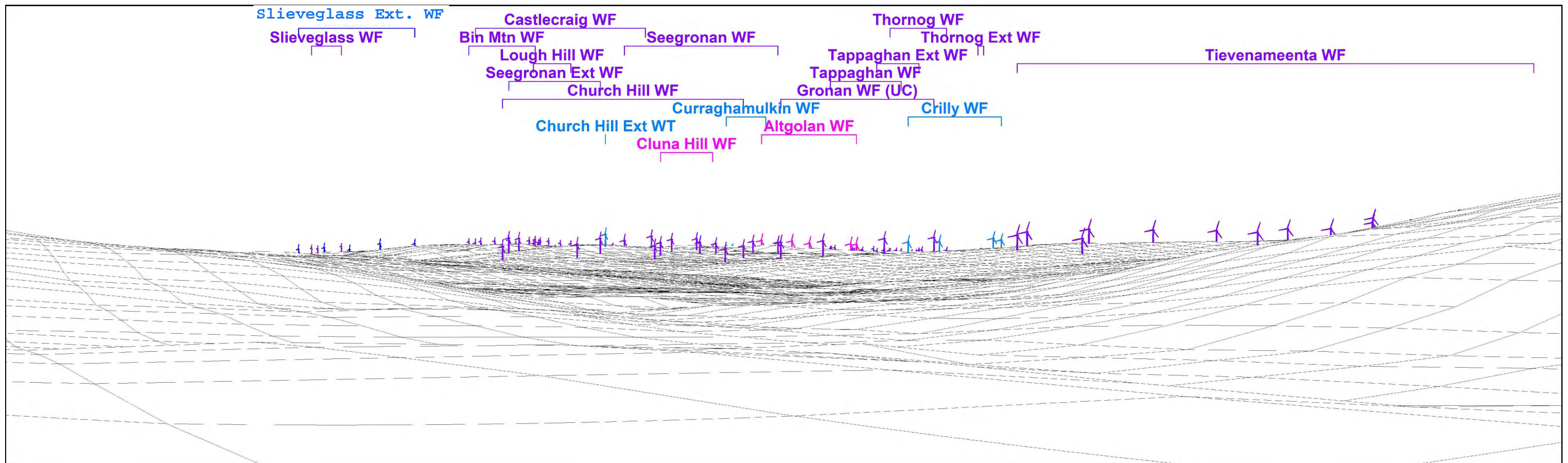
Camera and Photo data:
Camera: Canon EOS 5D MkII
Lens: Canon EF 50mm 1:1.4
Camera Height: 1.5 AGL
Date & Time: 29/09/2025 @ 13:23
Lighting: Weak Sunlight

Slieveglass Extension Wind Farm

VRP18: Tullycar Road
Figure VRP18: Viewpoint Information Overview



Photomontage 18f: Scenario 3: Predicted Possible Future View (Operational, Under Construction, Permitted and Submitted wind farms, and Proposed wind farm)



Wireframe 18f: Scenario 3: Predicted Possible Future View (Operational, Under Construction, Permitted and Submitted wind farms, and Proposed wind farm)

Canavan Associates Ltd.
 Environmental Consultants, Ecologists, Ornithologists
 Chartered Town Planners and Registered Architects
www.canavanassociates.com info@canavanassociates.com

Viewpoint and image data:
 Direction to centre of view: 124.4°
 Included angle: 65° (Cylindrical Projection)
 Image Size: 400mm x 118mm (9,126 x 2,693 Pixels)
 Principal Distance: 353mm
 Rendered Turbine Wind Direction: 255°

Predicted theoretical visibility of Proposed wind turbine on wireframe:
 Distance to nearest wind turbine: 16,735m
 Nearest Wind Turbine: T3
 blade tips theoretically visible: 5
 hubs theoretically visible: 5

Proposed Wind Farm:
 Turbine Layout: TL12
 Max Hub height: 91.5m
 Max Rotor Dia: 117m
 Max Tip height: 150m

Wind turbines visible on wireframe:

- Proposed Wind Turbines
- Operational Wind Turbines
- Under Construction Wind Turbines (Gronan)
- Permitted Wind Turbines (Exc. Altgolan & Clunahill)
- Submitted Wind Turbines (Inc. Altgolan & Clunahill)

Slieveglass Extension Wind Farm
VRP18: Tullycar Road
 Figure VRP18f: Scenario 3: Predicted Possible Future View (Operational, Under Construction, Permitted and Submitted wind farms, and Proposed wind farm)